

# PRODUCT BROCHURE

ELIYA<sup>®</sup>  
依莱雅

Hotel Supplies One-Stop Solution

ELIYA®

依莱雅

高端酒店纺织 High-end hotel Linen

LINEN PRO®

专注酒店纺织解决方案 Focus on hotel Linen solutions



星集一站式酒店采购 Hotel Vertical Solution

FINE HOME

家居精品生活馆 Home Boutique Living Museum

ELIYA

*Accessories*

洗护 / 香氛 Shampoo / Fragrance

ELIYA®

依莱雅



# COMPANY PROFILE

Established in 2006, ELIYA is specialized in supplying ISO9001 quality assured hotel linen.

Years of experience and understanding of customers enable us to offer superior quality product at reasonable price. We have track record of business reliability from customers around the world, including third-party partners, hotel chains, independent properties and airlines etc.

We are verified by Bureau Veritas as a professional supplier in the world. In China, ELIYA is a vice president enterprise of China Hospitality Supplies Industry Association.

# One Stop

Hotel Supplies procurement  
Professional, Efficient, Simple, and Trustworthy



ELIYA<sup>®</sup>  
依莱雅

Bed Linen 客房布草 19-56

Bathroom Linen 浴室布草 57-102

Curtain 窗帘 103-112

Mattress 床垫 113-116

Room Supplies 客房用品 118-149

Lobby Supplies 大堂用品 149-166

Hotel Amenities 易耗品 166-222

Table Linen 餐饮布草223-260

Ceramic 陶瓷 261-278

Glass 玻璃杯 279-300

Cooking Utensil 厨具 301-338

# Superior service

## We understand you

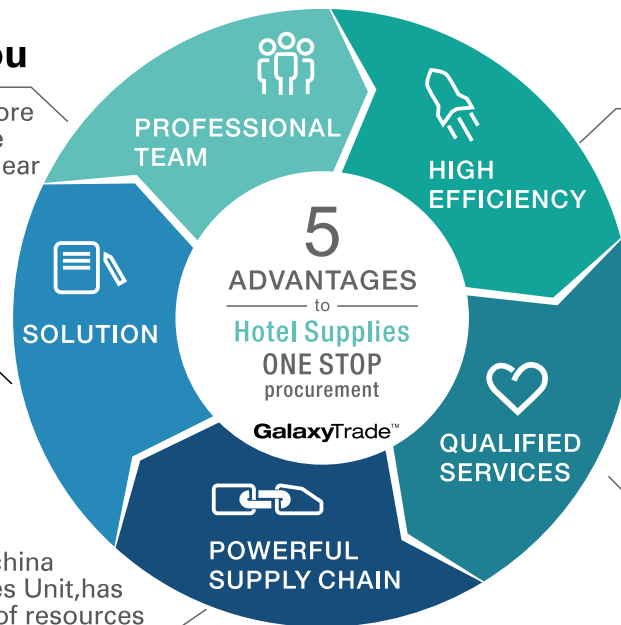
The team members have more than ten years of experience in the hotel, and have very clear understanding on hotel supplies' quality requirements.

## We can help you

We can customize the DESIGN for you or plan according to your budget requirements.

We're the president of the China Association of Hotel Supplies Unit, has many quality manufacturer of resources

## Optimization of manufacturers resources



## ONE STOP

Quickly integrate resources for you, saving time costs

Guest Traffic transfer, coordination of logistics, local information

## Considerate service

**ELIYA®**  
依莱雅



# Supply chain advantage

Our supply chain possesses numerous significant advantages, providing customers with stable, efficient, and reliable products and services.

**Professional design solutions:** With a design team boasting professional hotel backgrounds, extensive experience, a comprehensive design capability across all categories, and personalized customization services, we can offer hotels product solutions that harmonize seamlessly with their style. This not only helps enhance the overall quality and image of the hotel but also creates a unique competitive advantage.

**Stable supply guarantee:** We have established long-term stable partnerships and work closely with high-quality suppliers to ensure a consistent supply of raw materials and components. This stable supply relationship not only helps reduce procurement costs but also ensures the stability and reliability of product quality.

**Efficient logistics distribution:** We have an efficient logistics distribution system that can quickly respond to customer demands and ensure timely product delivery. By partnering with renowned logistics companies, we achieve real-time sharing and tracking of logistics information, enhancing logistics efficiency and reducing transportation costs.

**Flexible customization capability:** Our supply chain is highly flexible and can customize production according to customers' personalized needs. Whether it's product specifications, materials, or packaging requirements, we can

quickly adjust the supply chain configuration to meet unique customer demands.

**Strict quality management:** We emphasize product quality management, establishing stringent quality control systems from raw material procurement to production processes and final product inspection. By jointly establishing quality standards with suppliers, we ensure the stability and reliability of product quality.

**Risk management and response:** We have a sound risk management mechanism to predict and address potential risks in the supply chain. Through diversified procurement, inventory optimization, and supply chain visualization, we reduce the likelihood of supply interruptions, quality issues, and other risks.

**Information sharing and collaboration:** We leverage advanced information technology to enable information sharing and collaboration among various stages of the supply chain. This helps reduce communication costs, improve decision-making efficiency, and ensure the smooth operation of the supply chain.

In conclusion, our supply chain advantages lie in stable supply guarantees, efficient logistics distribution, flexible customization capabilities, strict quality management, risk management and response, information sharing, and collaboration. These strengths enable us to provide customers with high-quality products and services that meet the constantly changing and evolving market demands.



# Supporting and solutions

We possess strong product supply capabilities, enabling us to provide customers with comprehensive supporting facilities and solutions.

We have a rich product line that covers various hotel supplies, including but not limited to bedding, bathroom items, catering utensils, decorative ornaments, etc. Whether it is the supply of individual products or the supporting needs of the entire hotel, we can provide one-stop services to ensure that customers can easily meet various needs.

Secondly, we focus on product quality and innovation. We are well aware that the quality of hotel supplies directly affects customers' accommodation experience. Therefore, we always adhere to the use of high-quality raw materials and strictly control every link in the production process to ensure that every product meets the highest industry standards. At the same time, we also focus on innovative product design to meet the different hotel styles and personalized needs.

Apart from product supply, we can also provide comprehensive solutions. We have a professional team that can deeply understand the specific needs of customers and provide customized supporting solutions based on the

hotel's positioning, style, budget, and other factors. We will comprehensively consider various aspects such as product matching, style unity, and cost control to ensure that the solution not only meets the customer's requirements but also achieves the best cost-effectiveness.

In addition, we also have strong logistics and distribution capabilities. We have established long-term cooperation relationships with many well-known logistics companies to ensure that products are delivered to customers in a timely and safe manner. We also provide flexible delivery methods, selecting the most suitable transportation method and time according to customer needs and specific situations to ensure that customers can successfully receive the products.

In summary, we possess strong product supply capabilities, enabling us to provide customers with comprehensive supporting facilities and solutions. We have a rich product line, high-quality products, a professional team, and strong logistics and distribution capabilities, ensuring that customers can enjoy high-quality services and satisfactory products. Whether it is a large hotel group or a small inn, we can provide you with the most suitable solutions to help your hotel business flourish.



# customization

We possess excellent customized service capabilities, which are mainly attributed to our rich industry experience, advanced technological equipment, and professional team.

Firstly, we are fully aware that every hotel has its unique needs and style. Therefore, we always adhere to a customer-oriented approach and provide personalized customization services. Whether it's the style, color, material, size, function, or other aspects of hotel supplies, we can design and produce according to the specific requirements of customers.

Secondly, we possess advanced production equipment and exquisite craftsmanship, enabling us to meet various complex customization needs. Our production line is highly flexible and can be quickly adjusted to adapt to different production processes and product specifications. At the same time, we have a professional technical team with rich experience and

innovative capabilities, who can provide customers with the best customization solutions.

In addition, we focus on communication and cooperation with customers to ensure close contact and timely feedback throughout the customization process. We will regularly communicate and exchange with customers to understand their needs and opinions, so as to adjust and optimize the customization solutions in time. This close partnership allows us to better meet customer expectations and win their trust and praise.

In summary, we possess strong customized service capabilities and can provide customers with personalized and professional hotel supplies customization services. Whether it's a high-end luxurious star hotel or a cozy and comfortable inn, we can create unique hotel supplies according to the customer's needs and style, adding unique charm to the hotel.

# Soft production

We possess a highly flexible production line and equipment. These devices can not only efficiently carry out mass production, but also quickly adapt to the production needs of different specifications and types of hotel supplies. Whether it's adjusting product parameters or changing the production process, our production line can complete it in a short time to ensure that we meet the customized needs of customers.

Secondly, we possess agile supply chain management capabilities. We have established long-term and stable partnerships with numerous high-quality suppliers to ensure a stable supply of raw materials and components. At the same time, our logistics system operates efficiently and can ensure that products are delivered to customers promptly and accurately.

Furthermore, we focus on the introduction and application of intelligent management systems. Leveraging technologies such as the Internet of

Things, big data, and artificial intelligence, we have achieved real-time monitoring and intelligent adjustment of the production process. This not only improves production efficiency but also reduces waste and losses during the production process, further enhancing product quality and customer satisfaction.

In addition, we have a team of high-quality employees. They not only possess rich production experience and skills but also have a sense of innovation and team spirit. In the soft production process, they can quickly respond to market changes and customer needs, ensuring the smooth completion of production tasks.

In summary, we possess strong soft production capabilities and can provide customers with efficient, flexible, and personalized hotel supplies production services. We firmly believe that with our professional abilities and quality services, we will definitely win the trust and satisfaction of customers.



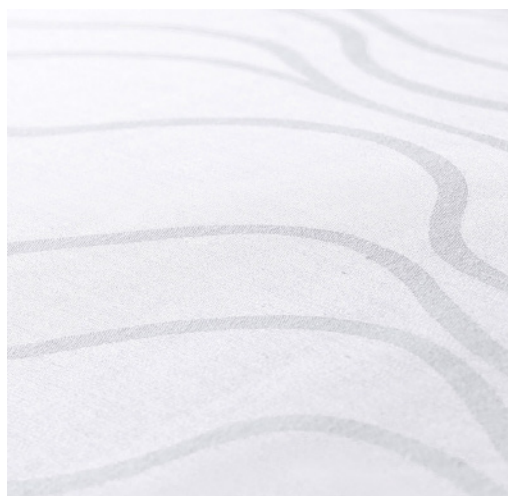
# Bed Linen



ELIYA high-end hotel linen, showing quality and ingenuity. We specialize in high-end hotels and understand the importance of quality and detail to a hotel's image. We select domestic high quality combed yarn and renowned Egyptian cotton yarn as raw materials to ensure the original quality of each product. A variety of fabric options, covering plain, sateen, satin strip, jacquard and other processes, not only to meet the diverse needs of the hotel, but also to show the unique charm of linen.

Choose ELIYA, choose the perfect combination of quality and ingenuity. We are committed to creating a superior linen experience for your hotel that sets you apart from your competitors. ELIYA is not only a linen manufacturer, but also the guardian of the quality and image of the hotel.









One Set	Flat or Fitted Sheet * 1, Duvet Cover * 1, Pillow case * 2 ,Top sheet * 1		
Material	100% Cotton or Polycotton		
Thread Count	200TC,250TC,300TC,400TC		
Size	Super King, King, Queen, Twin		
MOQ	100 Sets	Color	Plain White or Made to Order
Personalising Service	* ID Thread Color for Duvet Covers and Sheets * Customer's Name Label or Logo		





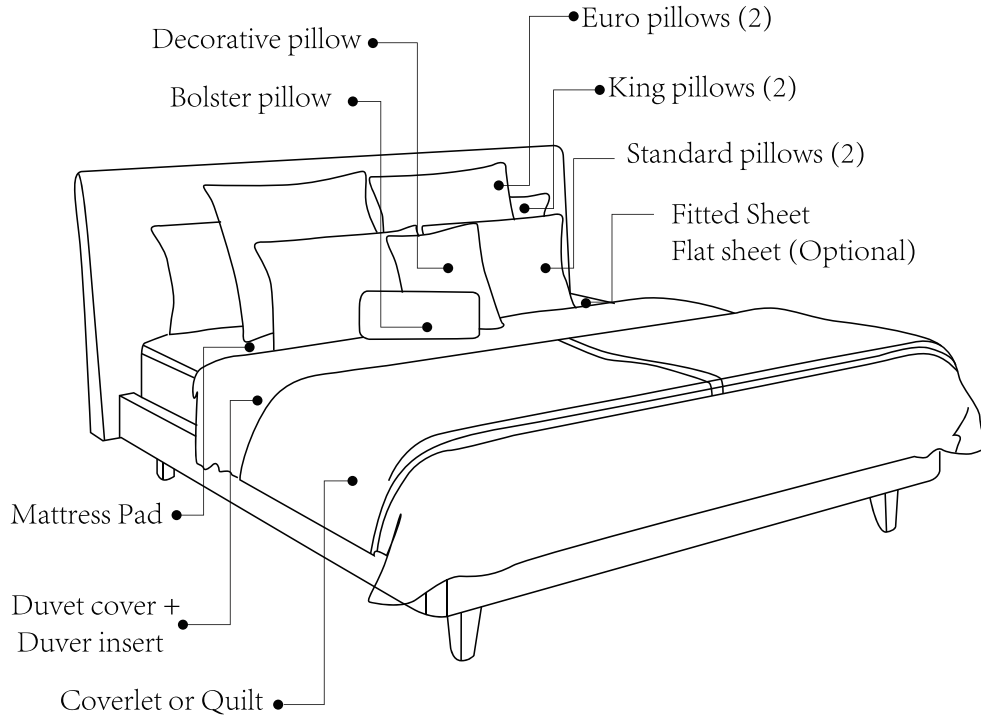




One Set	Flat or Fitted Sheet * 1, Duvet Cover * 1, Pillow case * 2, Top sheet * 1		
Material	100% Cotton or Polycotton		
Thread Count	200TC,250TC,300TC,400TC,500TC,600TC,800TC,1000TC		
Size	Super King, King, Queen, Twin (Refer to P20 for detail)		
MOQ	100 Sets	Color	Plain White or Made to Order
Personalising Service	* ID Thread Color for Duvet Covers and Sheets * Customer's Name Label or Logo		



# PLATFORM BED



One Set	Flat or Fitted Sheet * 1, Duvet Cover * 1, Pillow case * 2 ,Top sheet * 1		
Material	100% Cotton, Polycotton according to request		
Thread Count	300TC,400TC, 600TC, 800TC,1000TC		
Size	Super King, King, Queen, Twin		
MOQ	100 Sets	Color	Plain White or Made to Order
Personalising Service	* ID Thread Color for Duvet Covers and Sheets * Customer's Name Label or Logo		

# Comforter

The down filling of ELIYA top-quality goose or duck down duvets can reach to 95%, and the weight of all the products can be customized according to your order. It is an ideal choice for luxury hotels & resorts, boutiques and service apartments etc.

Quilts filled by microfiber or hollow fiber are available.

MOQ: 100 Pieces



	Bed Sizes	Duvets / Quilts
Double/twin/full	35.5" X 79"/90cm X 200cm	55" X 86"/140cm X 220cm
	47" X 79"/120cm X 200cm	67" X 86"/170cm X 220cm
Single	55" X 79"/140cm X 200cm	75" X 86"/190cm X 220cm
Queen	59" X 79"/180cm X 200cm	79" X 86"/200cm X 220cm
king	71" X 79"/180cm X 200cm	90" X 86"/230cm X 220cm
Super King	79" X 79"/200cm X 200cm	98" X 86"/250cm X 220cm



## Goose down duvet

ELIYA Down duvet, using high-quality goose down or duck down, natural, soft, warm, breathable and fluffy in one, Which become first choice of Eco-friendly comforter. Its down content ranges from 60% to 95%, because of its high quality and comfort, it is loved by high-star hotels, bringing quality sleep experience to your hotel guests.



ELIYA microfiber quilt, selection of new superfine cotton fabric and high quality microfiber, shaped into a whole sheet, design, durable, cost-effective. Good heat preservation, pure cotton or soft polyester fiber fabric can be selected according to customer needs. Filling thicknesses range from 200gsm to 600gsm per square metre to meet the needs of hotels in different countries.



Pillow



- 1.Natural Goose Down Pillow
- 2.Natural Duck Down Pillow
- 3.Memory Foam Pillow
- 4.Fiber pillow
- 5.Health pillow

MOQ:100 Pieces

Size:Tailor made

# Bed Runer , Cushion





Bed throws and cushions, as the finishing touch in hotel rooms, are crucial to the expression of spatial style. Our company is well aware of the important role of bed throws and cushions in room decoration, and we have poured great efforts into their design and production.

In the design stage, we conduct thorough research on various hotel styles, combine fashionable elements with practicality, and tailor unique bed throws and cushions for each hotel. We focus on color matching and pattern design, striving to create a cozy and comfortable room environment in harmony with the hotel's overall style.

During the production process, we select high-quality fabrics and fillers to ensure the softness, comfort, and durability of bed throws and cushions. We strictly control every production link to ensure the fineness and quality of bed throws and cushions.

The clever use of bed throws and cushions can not only enhance the visual effect of the room space but also bring guests a warm feeling of being at home. We are committed to adding a bright touch to the hotel room space through the design and production of bed throws and cushions.

By choosing our bed throws and cushions, you will get not only decoration but also a perfect interpretation of the hotel space style. We look forward to working with you to create a unique hotel room space.



Product	Bed runner / Bedspread.		
Material	High -grade fabric		
Size	King / Queen / Full / Twin		
MOQ	100 Sets	Color	Made to Order
Remark	Could make as per room design color tone.		

# Bathroom Linen Towels









EIYA Hotel towel series, selected high-quality cotton yarn, combined with rigorous manufacturing process and environmental dyeing technology, to create soft, comfortable, healthy and durable towels. Its delicate and soft texture and excellent water absorption bring guests unparalleled bath enjoyment, so that they can feel intimate care and care in every moment of the bath.

To meet the individual needs of different hotels, we offer a wide selection of towel densities ranging from 500gsm to 650gsm to ensure the durability and quality of towels. In addition, we also provide a variety of processes, including plain weaving, dobby boder, jacquard (including logo custom) embroidery, yarn-dyed, etc., so that the hotel can create a unique towel product according to its own brand style and guest preferences.

We are committed to working with the hotel to create a pleasant and memorable bathing experience for guests.







One Set	Hotel Towel Set		
Material	100% Cotton		
Weight & Size	Made to Order		
Design	Plain,dobby border		
MOQ	300 Sets	Color	Made to Order
Personalising Service	Customer's Name Label or Logo by embroidery or jacquard technic		

ELIYA Towel Size Chart (cm)

Towels	Size(cm)	Weight(g)
Bath Towel/Beach Towel/Spa Towel	70X140/ 75X150/ 80X150/ 80X160	500/600/650/700/800/850
Hand Towel	38X70/ 35X75/ 40X75/ 40X80/ 48X90	100/120/150/180/200/300
Face Towel	30X30/ 32X32/ 35X35	50/60/70

Remark:Any other size can be made according to your order.

# Pool Towel







# Floor mat

We are committed to providing a variety of materials and styles of bath mats for all kinds of hotel bathrooms to create the most comfortable experience. From anti-slip PVC to soft cotton , each material is carefully selected to meet different functional requirements. At the same time, we offer a variety of styles, including simple solid colors, patterns and textures, to adapt to different hotel styles. No matter how big or small your bathroom space is, we can customize the most suitable bath mat for you to ensure a perfect fit with the ground and enhance overall comfort. Choose our bath mats to make your hotel bathroom space radiate unique charm and bring guests a feeling of being at home.







# Bathrobe



Bathrobes are a crucial product for hotel customers' staying experience. We are well aware of the essence and demands of the hotel industry, so we have poured great efforts into the design, material selection, and weight control of bathrobes.

We fully understand the hotel industry's pursuit of customer experience, so we pay special attention to the skin-friendly feel when selecting the materials for bathrobes. We carefully select soft, breathable, and absorbent fabrics to ensure that guests can feel comfortable and relaxed when wearing the bathrobes, just like at home.

At the same time, we are also aware of the hotel industry's pursuit of details. Therefore, we strive to achieve the right weight for the bathrobes. They are neither too heavy to burden the guests nor too light to lack texture.

In terms of style design, we closely integrate the fashion trends of the hotel industry with customer needs. We offer a variety of styles and color options to meet the different styles and needs of hotel rooms. Whether it is simple and elegant or stylish and individual, we can customize and create unique bathrobe products for you.

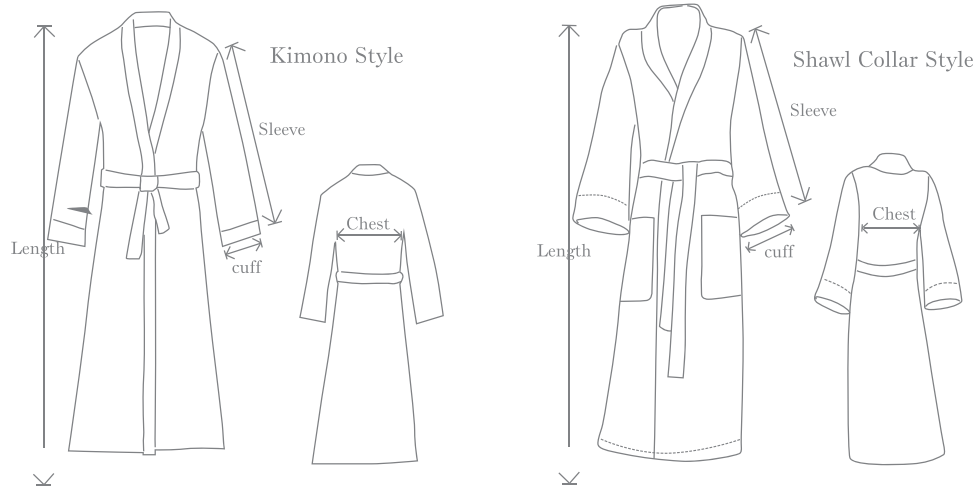
In summary, we fully understand the needs and pursuits of the hotel industry and are committed to providing high-quality, comfortable, and practical bathrobe products. We believe that through our efforts and dedication, we can definitely bring a more perfect staying experience to hotel customers.





ELIYA Bathrobe Size Chart (inch/cm)

Asia					
Size	Length	Chest	Shoulder	Sleeve	Cuff
S	43"(110cm)	47"(120cm)	20"(50cm)	19"(48cm)	8"(20cm)
M	45"(115cm)	49"(125cm)	20"(50cm)	20"(50cm)	8"(20cm)
L	47"(120cm)	51"(130cm)	21"(54cm)	20"(52cm)	8"(20cm)
XL	49"(125cm)	53"(135cm)	21"(54cm)	22"(55cm)	8"(20cm)
XXL	51"(130cm)	55"(140cm)	23"(58cm)	23"(58cm)	9"(22cm)
Africa & Europe & America					
Size	Length	Chest	Shoulder	Sleeve	Cuff
M	47"(120cm)	51"(130cm)	21"(54cm)	20"(52cm)	8"(20cm)
L	49"(125cm)	53"(135cm)	21"(54cm)	22"(55cm)	8"(20cm)
XL	51"(130cm)	55"(140cm)	23"(58cm)	23"(58cm)	9"(22cm)
Remark:Any other size can be made according to yout order.					





Product	Bathrobe		
Material	100% Cotton		
Size	Universal Size or Made to Order		
MOQ	100 Pieces	Color	Plain White or Made to Order
Personalising Service	Customer's Name Label or Logo by embroidery or jacquard technic		



# Curtain

Curtain as an important element of interior decoration, in addition to its basic shading, wind protection functions, but also carries the role of beautifying space and creating atmosphere.









# Mattress



Professional mattresses are an important guarantee for hotel guests to obtain quality sleep, and this point is widely recognized in the hotel industry. A high-quality mattress can not only provide a comfortable sleeping environment for guests, but also directly enhance their accommodation experience, thereby strengthening the hotel's market competitiveness.

Firstly, professional mattresses can be personalized according to different guests' sleeping needs and habits. Everyone has different heights, weights, and sleeping positions, so different hardness and supportiveness are required to adapt to their needs. Professional mattress manufacturers can provide customized mattress solutions based on the hotel's positioning and target customer groups, ensuring that each guest can find a mattress that suits them.

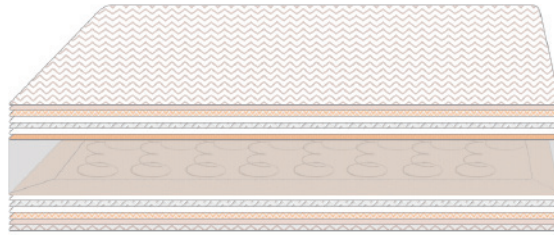
Secondly, professional mattresses focus on material selection and fine craftsmanship. They usually adopt high-quality springs, sponges, memory foam, and other materials, combined with ergonomic principles, to create a mattress

that is both comfortable and supportive. Such mattresses can fit the curves of the human body, reduce body pressure, and allow guests to fully relax and rest during sleep.

In addition, professional mattresses also focus on environmental protection and health. They adopt non-toxic, odorless, and non-irritating materials that meet relevant national environmental protection standards, ensuring the health and safety of guests. At the same time, professional mattresses also have antibacterial, anti-mite, and breathable functions, helping to maintain a clean and comfortable sleeping environment.

In summary, professional mattresses are an important guarantee for hotel guests to obtain quality sleep. Hotels should attach great importance to the selection and procurement of mattresses, ensuring the most comfortable and healthy sleeping environment for guests. Only by doing so can hotels improve customer satisfaction and loyalty, laying a solid foundation for their long-term development.





-  Cotton Knitted Fabric
-  10mm High Density Foam , better for Air Circulation & Eco-friendly
-  30mm High Density Foam
-  30g high duty non woven fabric
-  30mm High Resilience foam
-  60g high duty non woven fabric
-  4mm 300g/m2 white cotton pad
-  Pocket Spring, 2.2mm wire, 18cm height ,8cm foam reinforcement

# Room Supplies

To achieve the practicality, functionality and aesthetics of hotel room supplies in all aspects of professional system solution capabilities, need to be considered and designed from many aspects. This includes a combination of quality materials, unique design, and environmental protection. They not only meet the actual needs of guests, but also convey the hotel's pursuit of quality and beauty in details, creating a noble and comfortable accommodation experience for guests.

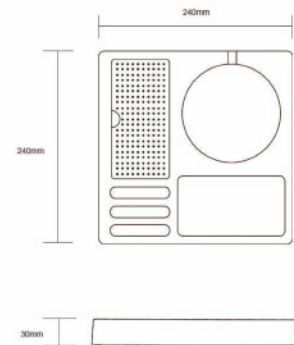


# T TRAY

Compact welcome tray

- Material :ABS
- Intergrated space for the kettle base
- Easy to clean
- Water resistant

Model	Specifications	Color
T	L240xW240xH30mm	Black
T-1	L240xW240xH30mm	Black



Main tray specifications

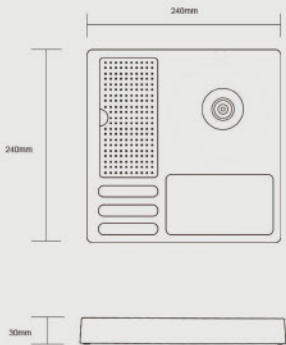
# T-1 TRAY

Compact welcome tray

- Material :ABS
- Intergrated space for the kettle base
- Easy to clean
- Water resistant



Model	Specifications	Color
T-1	L240xW240xH30mm	Black



Main tray specifications

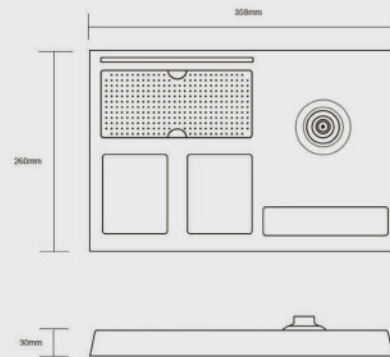
# I TRAY

Compact welcome tray

- Material :ABS
- Intergrated space for the kettle base
- 2 indentations for sachets and spoons
- Easy to clean
- Water resistant



Model	Specifications	Color
I	L358xW260xH30mm	Black / White



Main tray specifications

# JOVIAN

## 0.8 L Compact 304 stainless steel kettle

Power supply: 1350W-1600W (220V-240V ,50Hz-60Hz)  
Capacity: 0.8 litre  
Material: Food-grade 304 stainless steel  
Net weight:0.84kg  
Controller: Strix,guaranteed lifespan,fast boiling.  
Color option: Black/Khaki (matte)

### Product highlights:

- 2-Layer structure,cool touch exterior for safe handling.
- Auto Shut-Off and Boil-Dry protection, providing maximum safety.
- Wide lid opening design for easy cleaning.
- Concealed heating element.
- Seamless structure.
- 360° Cordless base with cable storage compartment.
- Power indicator light.
- Approved Certificates & Tests: CE, CB, IECEE .

Model	Specifications	Color
K83	L190xW135xH180mm	Black/Khaki



# NEBULA

## 1.0L Compact 2-Layer Anti-scald Kettle

Power supply: 1000W (220V-240V ,50Hz-60Hz)  
Capacity: 1.0 litre  
Material: Food-grade 304 stainless steel  
Net weight:0.82kg  
Controller: Chinese branded,guaranteed lifespan,fast boiling.  
Color option: Black(matt)

### Product highlights:

- 2-Layer structure,cool touch exterior for safe handling.
- Auto Shut-Off and Boil-Dry protection, providing maximum safety.
- Wide lid opening design for easy cleaning.
- Concealed heating element.
- Seamless structure.
- 360° Cordless base with cable storage compartment.
- Power indicator light.
- Approved Certificates & Tests: CE, CB, LFGB, RoHS, IECEE .

Model	Specifications	Color
H1012	L205xW135xH210mm	Black

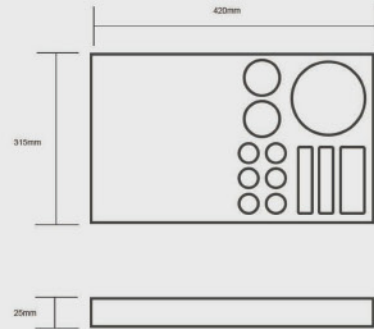


# N42

## Coffee&Tea High-end welcome tray

- Material: Beech wood
- Intergrated space for the kettle base
- Indentations for sachets, spoons, capsule and cups
- Easy to clean
- Strong lacquer to minimize scratches and stains

Model	Specifications	Color
N42	L420xW315xH25mm	Nature/Black



Main tray specifications

# IB03

## Metal Mesh Top Ironing Board

- Board size:110x33 cm
- Material: Steel
- Surface treatment: powder coating
- Thickness of felt:10mm
- Total max height:85cm, 7 gears adjustable height
- Packing: each pc shink wrapped,4pcs/ctn
- Leg tube dia:28mm&32mm

Model	Specifications	Color
IB-03	110×33cm	Silver grey



(Iron:HS-06,Iron Board:IB-03,Holder: IB03-3&5)



## IB03-3&5

- Ironing holder with anti-theft spare part
- Apply to hang ironing board into hotel wardrobe
- Color: silver
- Size: W14×D13×H42cm

# IB05

## Metal Mesh Top Ironing Board

- Board size:110x33 cm
- Material: Steel
- Surface treatment: powder coating
- Thickness of felt:7mm
- Total max height:85cm, 7 gears adjustable height
- Packing: each pc shink wrapped,4pcs/ctn
- Leg tube dia:28mm&32mm

Model	Specifications	Color
IB05	110×33cm	Black



(Iron: HS-05,Iron Board: IB-05,Holder: IB05-3&5)



## IB05-3&5

- Model: IB04-5
- Ironing holder hanging to wardrobe
- Color: black
- Size: W14xD13xH42cm

## ELECTRIC IRON

### HS-05

#### Steam iron

- 220-240V 50/60Hz , 1800W or 110V 60Hz 1000W
- Hotel steam master, safe and powerful
- Safe auto shut-off system:
  - horizontal position after 30 seconds
  - vertical position after 8 minutes
- Ceramic soleplate
- Dry/steam/spray/blast/anti-drip/self-clean functions
- ON and READY indicator light

Model	Specifications	Colour
HS-05	L292×W121×H145mm	Black



### HS-06

#### Steam iron

- 220-240V 50/60Hz , 1800W
- Hotel steam master, safe and powerful
- Safe auto shut-off system:
  - horizontal position after 30 seconds
  - vertical position after 8 minutes
- Ceramic soleplate
- Dry/steam/spray/blast/anti-drip/self-clean functions
- ON and READY indicator light

Model	Specifications	Colour
HS-06	L292×W121×H145mm	White/Grey





## HS-08

### Dry iron

- 220V-240V 50Hz-60Hz,1000W
- Function:Dry/adjustable temperature settings for different fabrics/over heat safety protection/
- Temperature pilot light
- Non-stick soleplate
- Auto-shut off
- -horizontal position after 30 seconds
- -vertical position after 8 minutes

Model	Specifications	Color
HS-08	L265×W103×H132mm	Black / White

## HS-22

### Steam iron

- 220V-240V ,50Hz-60Hz, 2200W
- Adjustable Temperature for different fabrics
- Dry/Spray/Steam/Burst steam/  
Self-cleaningAnti-calc/Anti-drip/Auto shut-off
- -horizontal position after 30 seconds
- -vertical position after 8 minutes
- Water tank capacity: 320ML
- Dial thermostat control
- Temperature pilot light
- Soft handle
- Soleplate: Ceramic

Model	Specifications	Colour
HS-22	L290×W122×H150mm	Black



# FLASHLIGHT

## 壁挂式手电筒

- 磁吸感应，即拿即亮接触式自动开关
- 30米超远射程，180天超长待机
- USB充电接口，节能环保
- 强光1w LED灯珠照明
- 壁身装置荧光显示贴，便于夜间找寻
- 壁挂式设计，免打孔安装
- 外观小巧精致，磨砂质地，简约时尚
- 曜石黑、珍珠白、太空灰、典雅灰4色可选



### F301 壁挂式手电筒



F301 曜石黑  
壁挂式手电筒



F301 珍珠白  
壁挂式手电筒



F301 太空灰  
壁挂式手电筒



F301 典雅灰  
壁挂式手电筒

#### ■ 大美至简 精工制作



USB充电



感应开关



超长待机



超远射程



耐用LED灯泡



夜间荧光指示

#### ■ 参数规格

型号: F301	灯珠功率: LED黄光1W	内盒尺寸: 7.5x18x5cm
颜色: 曜石黑/珍珠白/太空灰/典雅灰	充电功率: 5V 500毫安	外箱尺寸: 39.5x97.5x27cm
电池容量: 1200毫安	照射距离: 20-30m	净重: 14kg
使用时长: 10H	光照流明: 100lm	毛重: 14.7kg
待机时长: 180天	产品尺寸: 16x4.5x3.5cm	装箱数量: 50 PCS
充电时长: 2.30-3H		

# HANGERS

## 客房衣架

- 整体采用进口ABS材质，一体成型
- 磨砂质感，防刮花、防指纹
- 宽肩设计晾衣不易变形
- 典雅灰、曜石黑2色可选

### BW311 客房衣架



#### 参数规格

型号: BW311A/BW311B/BW311C	西装衣架: 45x5.2x22.2cm	净重: 6.2kg
颜色: 曜石黑/典雅灰	衬衫衣架: 45x3.2x22.2cm	毛重: 6.4kg
特点: 磨砂面/防指纹/防刮花	裤裙衣架: 45x3.2x22.2cm	装箱数量: 30 PCS
材质: 进口ABS	外箱尺寸: 80x24x46cm	



## BODY FAT SCALE 智能体重秤

- 极简风筒的轻薄体重秤：
- 塑料材质机身，超薄设计，不占空间
  - 优质钢化玻璃面+ABS材质
  - 全包底座，不怕磨损，坚固耐用
  - 人性化圆角设计，避免磕碰
  - 智能使用，轻松称重，瞬间显示，刻度精准到0.01KG
  - LED大数字清晰显示 无需弯腰瞬间即见

### F201 体重秤



F201 白色  
智能体重秤



F201 黑色  
智能体重秤



#### 精准数据 掌控健康



高精度传感器  
精确到0.01kg



隐藏式LED显示  
科技感十足



5MM钢化玻璃  
底部不伤双脚



280x280面板  
舒适的测量体验



柔和圆角设计  
防滑更安心

#### 参数规格

型 号：F201	承重面板：5mm钢化玻璃	外箱尺寸：43.8x34.7x34.5cm
颜 色：黑色/白色	称重范围：5Kg-180Kg	净 重：12.2kg
显示方式：LED显示屏	称重单位：KG/LB	毛 重：15kg
供电方式：3节7号电池	产品尺寸：28x28x2.3cm	装箱数量：10 PCS

## BODY FAT SCALE

智能体重秤



极简风简约轻薄体重秤:

- 面板采用大理石岩板, 触感温和无冰凉感
- LED大数字清晰显示 无需弯腰瞬间即见
- 优质钢化玻璃盖+ABS材质
- 全包底座, 不怕磨损, 坚固耐用
- 人性化圆角设计, 避免磕碰
- 智能使用, 轻松称重, 瞬间显示, 刻度精准到0.01KG

### BW206 体重秤



BW206 博尔特纹  
体重秤

#### 精准数据 掌控健康



高精度传感器  
精确到0.01kg



超大LED显示  
美观大气科技感十足



大理石岩板  
触感冰凉原质



320x300面板  
舒适的测量体验



柔和圆角设计  
防撞更安全

#### 参数规格

型号: BW206	承重面板: 大理石岩板	外箱尺寸: 40.5x36x27.5cm
颜色: 博尔特纹	称重范围: 5Kg-180Kg	净重: 9kg
显示方式: LED显示屏	称重单位: KG/LB	毛重: 11.6kg
供电方式: 3节7号电池	产品尺寸: 32.5x2.8x30cm	装箱数量: 6 PCS



HT010酒店(客房)电话机  
Hotel telephone



功能介绍

Function introduction

- 0-10个快捷服务键
- 防雷，近距离防电磁干扰
- 进口ABS塑胶料
- 高级亚克力定制面板
- 免提4级音量可调
- 遥控拷贝单键记忆

- 0-10 One-touch Memories
- Power Surge protection
- Imported ABS plastic
- Customizable Acrylic faceplate
- 4 levels Speaker volume control
- Easy phone setting duplication





## HT003酒店(浴室)电话机 Hotel telephone

红色SOS紧急呼叫键  
 专门为酒店浴室设计  
 新颖外形，手感舒适  
 墙壁，桌面两用  
 来电提示灯  
 国际领先工艺，磁簧  
 收线，防水防潮功能

1 one-touch memory button  
 Special design for the hotel bathroom,  
 classics appearance and comfortable feel  
 With the waterproof coating, anti high  
 temperature and anti high humidity  
 Desk&Wall Mountable  
 The line in international leading  
 technology, magnetic reed switch,  
 have waterproof spill-resistant function



## A060酒店(客房)电话机 Hotel telephone

专门为酒店浴室设计，经典外形，手感舒适。  
 重拨、闪断、静音功能，  
 经过防水涂层处理，可防高温、高湿。  
 挂壁/桌面两用  
 鸣铃音量大小调节，音质柔和，节奏舒缓

Special design for the hotel bathroom, classics appearance and  
 comfortable feel;  
 Redial, Flash, Mute Function  
 With the waterproof coating, anti high temperature and anti  
 high humidity;  
 Desk & Wall Mountable  
 Ringer volume hi-low adjustable, soft ring ringtone and  
 comfortable rhythm



# Small body wise life

Small and delicate, simple and practical, to give you a high quality of life attitude. Hotel rooms, offices, home preferred products.



**CR-48B**

制冷方式: 半导体制冷  
温控方式: 机械控温  
噪音(dB): 30  
环境温度: 15°C-25°C  
冷藏范围: 5°C-12°C  
容积: 48L  
电压/频率: 220V~240V/50HZ  
产品净重(KG): 11kg  
产品毛重(KG): 12.5kg  
产品尺寸: 430x480x510mm  
包装尺寸: 460x515x530mm



**CW-48AC**

制冷方式: 半导体制冷  
温控方式: 机械控温  
噪音(dB): 30  
环境温度: 15°C-25°C  
冷藏范围: 11°C-18°C  
容积: 48L  
电压/频率: 220V~240V/50HZ  
产品净重(KG): 11kg  
产品毛重(KG): 12.5kg  
产品尺寸: 430x480x510mm  
包装尺寸: 460x515x530mm



**CR-30A**

制冷方式: 半导体制冷  
温控方式: 机械控温  
噪音(dB): 30  
环境温度: 15°C-25°C  
冷藏范围: 5°C-12°C  
容积: 30L  
电压/频率: 220V~240V/50HZ  
产品净重(KG): 7.8kg  
产品毛重(KG): 8.7kg  
产品尺寸: 380x385x466mm  
包装尺寸: 420x420x495mm



**CW-30AC**

制冷方式: 半导体制冷  
温控方式: 机械控温  
噪音(dB): 30  
环境温度: 15°C-25°C  
冷藏范围: 11°C-18°C  
容积: 30L  
电压/频率: 220V~240V/50HZ  
产品净重(KG): 10.1kg  
产品毛重(KG): 11.2kg  
产品尺寸: 380x385x466mm  
包装尺寸: 420x420x495mm



**BC-46/HC冰箱**

制冷方式: 压缩机制冷  
温控方式: 机械控温  
噪音(dB): 30  
环境温度: 15°C-25°C  
冷藏范围: -3°C-10°C  
容积: 46L  
电压/频率: 220V~240V/50HZ  
产品净重(KG): 15kg  
产品毛重(KG): 17kg  
产品尺寸: 430x480x510mm  
普通包装: 460x515x530mm  
加厚包装: 500x550x575mm



**JC-46/HC留样展示柜**

制冷方式: 压缩机制冷  
温控方式: 机械控温  
噪音(dB): 30  
环境温度: 15°C-25°C  
冷藏范围: 4°C-18°C  
容积: 46L  
电压/频率: 220V~240V/50HZ  
产品净重(KG): 17kg  
产品毛重(KG): 20kg  
产品尺寸: 430x480x510mm  
普通包装: 460x515x530mm  
加厚包装: 500x550x575mm



**CR-40A**

制冷方式: 半导体制冷  
温控方式: 机械控温  
噪音(dB): 30  
环境温度: 15°C-25°C  
冷藏范围: 5°C-12°C  
容积: 40L  
电压/频率: 220V~240V/50HZ  
产品净重(KG): 10kg  
产品毛重(KG): 11.8kg  
产品尺寸: 430x410x501mm  
包装尺寸: 460x440x530mm



**CW-40AC**

制冷方式: 半导体制冷  
温控方式: 机械控温  
噪音(dB): 30  
环境温度: 15°C-25°C  
冷藏范围: 11°C-18°C  
容积: 40L  
电压/频率: 220V~240V/50HZ  
产品净重(KG): 11.8kg  
产品毛重(KG): 12.8kg  
产品尺寸: 430x410x501mm  
包装尺寸: 460x440x530mm



**CW-30H(纯静音)**

制冷方式: 半导体制冷  
温控方式: 机械控温  
噪音(dB): 0  
环境温度: 15°C-25°C  
冷藏范围: 5°C-12°C  
容积: 30L  
电压/频率: 220V~240V/50HZ  
产品净重(KG): 9.9kg  
产品毛重(KG): 10.9kg  
产品尺寸: 380x385x466mm  
包装尺寸: 420x420x495mm



**CW-30AC(镜面玻璃门)**

制冷方式: 半导体制冷  
温控方式: 机械控温  
噪音(dB): 30  
环境温度: 15°C-25°C  
冷藏范围: 5°C-18°C  
容积: 30L  
电压/频率: 220V~240V/50HZ  
产品净重(KG): 9.9kg  
产品毛重(KG): 10.9kg  
产品尺寸: 380x385x466mm  
包装尺寸: 420x420x495mm



**CW-40H(纯静音)**

制冷方式: 半导体制冷  
温控方式: 机械控温  
噪音(dB): 0  
环境温度: 15°C-25°C  
冷藏范围: 5°C-12°C  
容积: 40L  
电压/频率: 220V~240V/50HZ  
产品净重(KG): 12.6kg  
产品毛重(KG): 13.7kg  
产品尺寸: 430x410x501mm  
包装尺寸: 460x440x530mm



**CW-40AC(镜面玻璃门)**

制冷方式: 半导体制冷  
温控方式: 机械控温  
噪音(dB): 30  
环境温度: 15°C-25°C  
冷藏范围: 5°C-18°C  
容积: 40L  
电压/频率: 220V~240V/50HZ  
产品净重(KG): 11.3kg  
产品毛重(KG): 12.4kg  
产品尺寸: 430x410x501mm  
包装尺寸: 460x440x530mm

Ground ash barrel series  
房间垃圾桶 系列



GPX-45B



产品型号 Model No.	产品名称 Model Name	颜色描述 Color	说明 Description	外观尺寸 Overall Size(mm)	每包装数量 Packing Quantity
GPX-45B	椭圆双盖垃圾桶	砂钢	可坐脚踏脚踏桶盖, 脚踏脚踏桶盖, 脚踏脚踏桶盖	268*205*270	6个
GPX-45B	椭圆双盖垃圾桶	黑色, 咖啡色, 枣红色, 米黄色, 红纯木色	可坐脚踏脚踏桶盖, 脚踏脚踏桶盖, 脚踏脚踏桶盖	268*205*270	6个
GPX-45B	椭圆双盖垃圾桶	皮纹	可坐脚踏脚踏桶盖, 脚踏脚踏桶盖, 脚踏脚踏桶盖	268*205*270	6个

Ground ash barrel series  
房间垃圾桶 系列

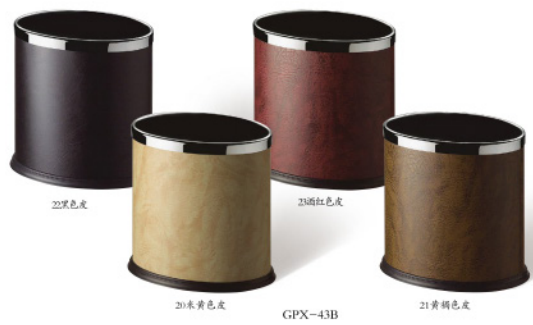


产品型号 Model No.	产品名称 Model Name	颜色描述 Color	说明 Description	外观尺寸 Overall Size(mm)	每包装数量 Packing Quantity
GPX-45M	椭圆双盖脚踏桶	砂钢, 黑色, 杏色	可坐脚踏脚踏桶盖, 可坐脚踏脚踏桶盖, 可坐脚踏脚踏桶盖	260*205*265	6个
GPX-45N	圆形双盖脚踏桶	砂钢, 黑色, 杏色	可坐脚踏脚踏桶盖, 可坐脚踏脚踏桶盖, 可坐脚踏脚踏桶盖	Φ235*265	6个

Ground ash barrel series  
房间垃圾桶 系列



GPX-43



GPX-43B

产品型号 Model No.	产品名称 Model Name	颜色描述 Color	说明 Description	外观尺寸 Overall Size(mm)	每包装数量 Packing Quantity
GPX-43	圆形单盖垃圾桶	黑色皮, 米黄色皮, 枣红色皮, 米黄色皮, 米黄色皮	固定脚踏脚踏桶盖, 脚踏脚踏桶盖	Φ235*280	6个
GPX-43B	椭圆单盖垃圾桶	黑色皮, 米黄色皮, 枣红色皮, 米黄色皮	固定脚踏脚踏桶盖, 脚踏脚踏桶盖	267*203*265	6个

Ground ash barrel series  
房间垃圾桶 系列



GPX-106

GPX-106B

产品型号 Model No.	产品名称 Model Name	颜色描述 Color	说明 Description	外观尺寸 Overall Size(mm)	每包装数量 Packing Quantity
GPX-106	圆形单盖脚踏桶	皮纹	可坐脚踏脚踏桶盖, A类, B类, C类脚踏脚踏桶盖, 脚踏脚踏桶盖	Φ235*280	6个
GPX-106B	椭圆单盖脚踏桶	皮纹	可坐脚踏脚踏桶盖, A类, B类, C类脚踏脚踏桶盖, 脚踏脚踏桶盖	267*203*265	6个

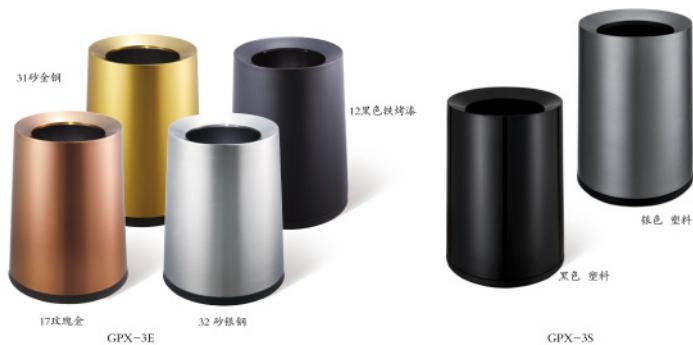


专利产品，仿冒必究  
Patented Product



32号银铜 SJ3-Y03    24号香槟金 SJ5-Y03    32号银铜 SJ8-Y03    13号黑金 SJ12-Y03    17号玫瑰金 SJ20-Y03    32号银铜 SJ30-Y03

产品型号 Model No.	产品名称 Model Name	颜色描述 Color	说明 Description	外观尺寸 Overall Size(mm)	包装数量 Packing Quantity	包装描述 Package
SJ3-Y03	圆形脚踏桶	砂铜铜、黑金、香槟金、玫瑰金	防指纹，静音降噪，容量 3L	230*172*269	4个	商务装
SJ5-Y03	圆形脚踏桶	砂铜铜、黑金、香槟金、玫瑰金	防指纹，静音降噪，容量 5L	252*213*295	4个	商务装
SJ8-Y03	圆形脚踏桶	砂铜铜、黑金、香槟金、玫瑰金	防指纹，静音降噪，容量 8L	230*260*372	4个	商务装
SJ12-Y03	圆形脚踏桶	砂铜铜、黑金、香槟金、玫瑰金	防指纹，静音降噪，容量 12L	323*275*405	2个	商务装
SJ20-Y03	圆形脚踏桶	砂铜铜、黑金、香槟金、玫瑰金	防指纹，静音降噪，容量 20L	360*314*475	1个	商务装
SJ30-Y03	圆形脚踏桶	砂铜铜、香槟金	防指纹，静音降噪，容量 30L	360*314*695	1个	商务装



31号全铜    12黑色铁烤漆    17号玫瑰金    32号银铜    黑色塑料    GPX-3E    GPX-3S

产品型号 Model No.	产品名称 Model Name	颜色描述 Color	说明 Description	外观尺寸 Overall Size(mm)	包装尺寸/数量 Packing Size/Quantity
GPX-3E	塑料脚踏桶	玫瑰金、砂金铜、砂铜铜、黑色铁烤漆	铁烤漆内桶，塑料底座	Φ230*320	6个
GPX-3S	塑料脚踏桶	黑色、黑色	铁烤漆内桶，塑料底座	Φ230*320	6个

Ground ash barrel series  
座地烟灰桶 系列



产品型号 Model No.	产品名称 Model Name	颜色描述 Color	说明 Description	外形尺寸 Overall Size(mm)	每包数量 Packing Quantity	包装描述 Package
GPX-228	座地烟灰桶	高金烤漆, 玫瑰金烤漆, 铸铝压铸网络	白色压铸网络, 玫瑰金铸头, 铸铝压铸	300*300*600	1个	铁架
GPX-240	座地烟灰桶	玫瑰金配黑色, 铸铝压铸网络		310*310*780	1个	木架

Ground ash barrel series  
座地烟灰桶 系列



产品型号 Model No.	产品名称 Model Name	颜色描述 Color	说明 Description	外形尺寸 Overall Size(mm)	每包数量 Packing Quantity
GPX-231A	座地烟灰桶	白色烤漆	可定制 LOGO 铸印标志	380*250*670	1个
GPX-231B	座地烟灰桶	白色烤漆	可定制 LOGO 铸印标志	380*250*670	1个

Ground ash barrel series  
座地烟灰桶 系列



产品型号 Model No.	产品名称 Model Name	颜色描述 Color	说明 Description	外形尺寸 Overall Size(mm)	每包数量 Packing Quantity
GPX-9M	座地烟灰桶	高金配玫瑰金	可定制 LOGO 铸印标志	375*330*647	1个
GPX-9K	座地烟灰桶	玫瑰金配黑色, 砂铜	可定制铸印标志	360*350*815	1个

Ground ash barrel series  
座地烟灰桶 系列



产品型号 Model No.	产品名称 Model Name	颜色描述 Color	说明 Description	外形尺寸 Overall Size(mm)	每包数量 Packing Quantity
GPX-226	座地烟灰桶	砂铜, 铁烤漆		Φ300*803	1个
GPX-9E	座地烟灰桶	砂铜, 黑色	铸铝压铸网络	270*270*740	1个
GPX-9D	座地烟灰桶	砂铜, 黑色	铸铝压铸网络	270*270*740	1个

Ground ash barrel series  
座地烟灰桶 系列

定制  
方案

全国各地分类  
项标识  
均可定制



GPX-30F (双联款)



GPX-30H (双联款)

GPX-30G (双联款)

Ground ash barrel series  
座地烟灰桶 系列



内胆采用材料与桶身紧密贴合，有效防止垃圾异味。

密封条紧密贴合，有效防止垃圾异味。



Finger print Resistant  
防指纹



水泥灰色

水泥灰色

铜色

铜色

12黑色

GPX-110E (防指纹)

32砂银

13黑色

产品型号 Model No.	产品名称 Model Name	颜色描述 Color	说明 Description	外观尺寸 Overall Size(mm)	每包装数量 Packing Quantity
GPX-110E	立式垃圾桶	香槟金、黑金、砂银、黑烤漆、水泥灰色	加厚镀锌工艺、塑料桶盖	Ø380*765	1个

Ground ash barrel series  
座地烟灰桶 系列

双向投递，使用便捷



哑黑色

GPX-110Q1  
(单投口)



哑黑色



水泥灰色

GPX-110Q2  
(双投口)

产品型号 Model No.	产品名称 Model Name	颜色描述 Color	说明 Description	外观尺寸 Overall Size(mm)	每包装数量 Packing Quantity
GPX-110Q1	立式垃圾桶	哑黑色		Ø380*920	1个
GPX-110Q2	立式垃圾桶	水泥灰色、哑黑色		Ø380*920	1个

Ground ash barrel series  
座地烟灰桶 系列



ST-50Y  
(50L 塑料内胆)

全新加骨  
压建工艺

13黑金

13砂银

GPX-110U

铜色



24铜色新金



水泥灰色



32砂银

产品型号 Model No.	产品名称 Model Name	颜色描述 Color	说明 Description	外观尺寸 Overall Size(mm)	每包装数量 Packing Quantity
GPX-110Y	立式垃圾桶	香槟金、黑金、砂银、黑烤漆、水泥灰色	加厚镀锌工艺、塑料桶盖	Ø380*765	1个
ST-50Y	塑料内胆	黑色		Ø350*670	按实际数量发货
GPX-110U	立式垃圾桶	砂银、黑金	黑金(防指纹)	Ø380*690	1个



Sign stand series  
指示牌系列



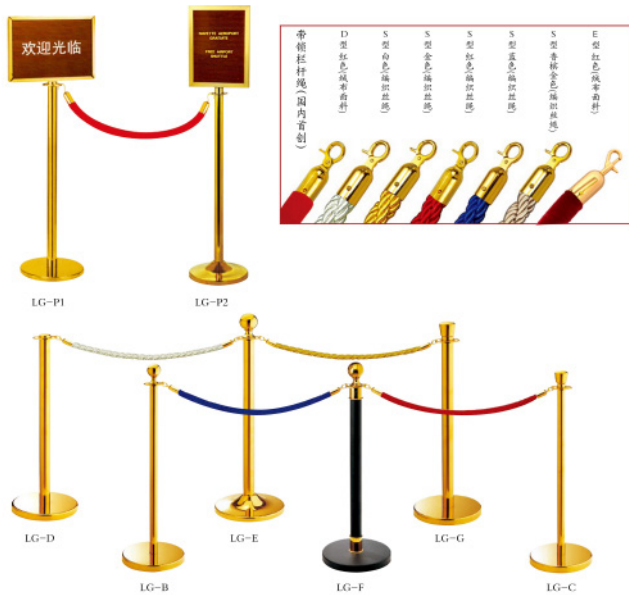
产品型号 Model No.	产品名称 Model Name	颜色描述 Color	说明 Description	外形尺寸 Overall Size(mm)	底座尺寸 Vase Size(mm)	每包装数量 Packing Quantity
P-17D	可移动式停车牌	银灰	可折叠, 可拆卸, 可叠, 可立架	310*330*600	240*395	2个
P-17G	停车牌	银灰, 玫瑰金	可折叠, 可拆卸, 可叠, 可立架, 最大高度310mm	325*235*600		1个

Umbrella rack series  
雨伞架系列



产品型号 Model No.	产品名称 Model Name	颜色描述 Color	说明 Description	外形尺寸 Overall Size(mm)	每包装数量 Packing Quantity
J-8	圆管伞架全套 (18头)	铁金		570*510*1050	1个
J-8	圆管伞架全套 (24头)	铁金		740*470*1050	1个
J-8	圆管伞架全套 (36头)	铁金		1100*500*1000	1个
J-8A	方管伞架全套 (18头)	铁金		580*487*1010	1个
J-8A	方管伞架全套 (24头)	铁金		750*480*1010	1个
J-8A	方管伞架全套 (36头)	铁金		1090*480*1010	1个
J-18A	挂铁伞架全套	咖啡色		860*420*850	1个
J-35	自热式雨伞架 (24头)	铁制, 铁金		870*370*760	1个
J-39	雨伞桶	黑色	可选带脚踏踏板配件	Φ220*575	1个
J-39A	雨伞桶	咖啡, 咖啡色		360*280*690	1个

Railing stand series  
栏杆座系列



产品型号 Model No.	产品名称 Model Name	颜色描述 Color	说明 Description	外形尺寸 Overall Size(mm)	每包装数量 Packing Quantity
LG-P1	美式双球头栏杆座	金色	圆球头, 可适配 D 型或 S 型带球头杆	420*320*1300	按出图数量包装
LG-P2	美式双球头栏杆座	金色	圆球头, 可适配 D 型或 S 型带球头杆	320*320*1440	按出图数量包装
LG-B	圆头杆杆座	铁制, 铁金	可适配 D 型或 S 型带球头杆, 可适配脚踏安全	Φ320*980	10个或 15个
LG-C	圆头杆杆座	铁制, 铁金	可适配 D 型或 S 型带球头杆, 可适配脚踏安全	Φ320*950	10个或 15个
LG-D	平头杆杆座	铁制, 铁金	可适配 D 型或 S 型带球头杆, 可适配脚踏安全	Φ320*910	10个或 15个
LG-E	圆头圆盖杆杆座	铁制, 铁金	可适配 D 型或 S 型带球头杆, 可适配脚踏安全	Φ320*1000	20个
LG-F	扁头杆杆座	黑色	可适配 D 型或 S 型带球头杆, 可适配脚踏安全	Φ360*1000	20个
LG-G	大扁头杆杆座	铁制, 铁金	可适配 D 型或 S 型带球头杆, 可适配脚踏安全	Φ320*950	10个或 15个

Clothes rack series  
衣帽架系列



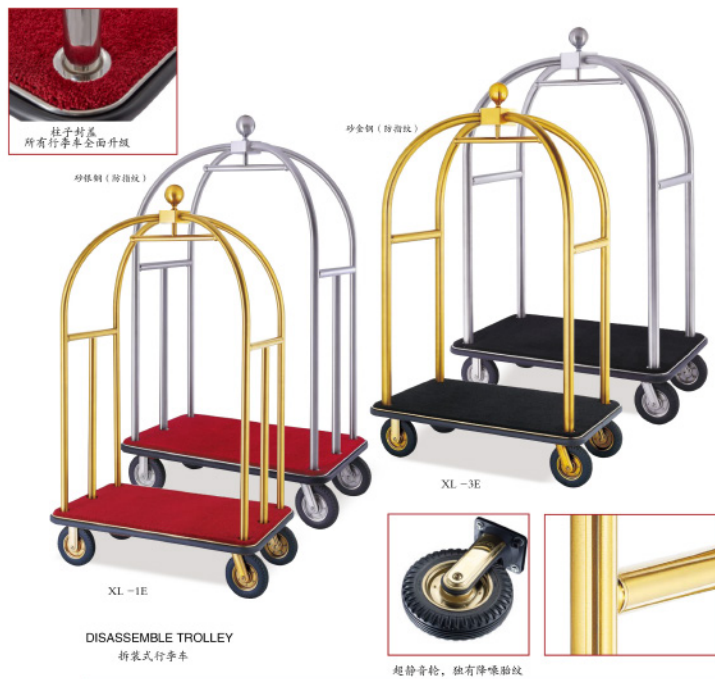
产品型号 Model No.	产品名称 Model Name	颜色描述 Color	说明 Description	外形尺寸 Overall Size(mm)	每包装数量 Packing Quantity
J-50	单衣衣架	红木色	挂配件	350*420*1175	1个
J-57	单衣衣架	红木色		Φ430*1950	1个
J-30	行李架	红木色		530*400*930	5个
J-30B	行李架	红木色		450*400*920	5个
J-30C	行李架	红木色		580*400*980	5个
J-48	行李架	红木色		600*400*970	2个
J-66	叠衣衣架	红木色		465*320*1317	1个
J-68	叠衣衣架	红木色		480*320*1220	1个

Baggage trolley series  
行李车 系列



产品型号 Model No.	产品名称 Model Name	颜色描述 Color	说明 Description	外观尺寸 Overall Size(mm)	每包装数量 Packing Quantity
XL-20	行李车 玫瑰金, 玫瑰金古铜 (封釉抛光)	玫瑰金	黑色地毯配全新 8 寸超静音轮	1135*670*1940	1 个
XL-24	行李车 玫瑰金, 玫瑰金古铜 (封釉抛光)	玫瑰金	黑色地毯配全新 8 寸超静音轮	1135*670*930	1 个

Baggage trolley series  
行李车 系列



DISASSEMBLE TROLLEY  
拆装式行李车



产品型号 Model No.	产品名称 Model Name	颜色描述 Color	说明 Description	外观尺寸 Overall Size(mm)	每包装数量 Packing Quantity
XL-1E	拆装式小童旅行行李车 红色, 玫瑰金, 钛金	红色	拆装, 配全新 8 寸超静音轮	1080*650*1930	1 个
XL-3E	拆装式大童旅行行李车 红色, 玫瑰金, 钛金	红色	拆装, 配全新 8 寸超静音轮	1150*700*1940	1 个

Service trolley series  
服务车 系列



产品型号 Model No.	产品名称 Model Name	颜色描述 Color	说明 Description	外观尺寸 Overall Size(mm)	每包装数量 Packing Quantity
C-43	折叠式服务车 蓝色, 蓝色外架	蓝色	可折叠	950*650*955 (折叠后 620*850)	1 个
C-42	折叠式服务车 蓝色, 蓝色外架	蓝色	可折叠	950*650*955 (折叠后 620*720*900)	1 个
C-41F	折叠式服务车 蓝色, 蓝色外架	蓝色	4 寸静音轮	680*680*900	1 个

Service trolley series  
服务车 系列

容量升级!! - 整体注塑成型, 容量更大, 用途更多



产品型号 Model No.	产品名称 Model Name	颜色描述 Color	说明 Description	外观尺寸 Overall Size(mm)	每包装数量 Packing Quantity
C-40U	塑料服务车	咖啡色, 灰色		1100*650*857	1 个

## Cleaning supplier series 清洁用品 系列

### 用途广泛，功能齐全，为酒店客房服务提供完整解决方案

- 1. 外观上，经过特殊的纹理处理更具质感，贵气大方；
- 2. 符合人体工程学设计的手柄，手感舒适、抓握容易、方便操控；
- 3. 新型的注塑工艺，令门板更坚固、更耐压；
- 4. 新型材质的车轮，配上全进口精密度高的不锈钢配件，在推行中更安静；
- 5. 四个角都有防撞装置，有效保护墙面及设备不受损坏；
- 6. 拥有大容量的储存空间以及可调整的中间隔板。



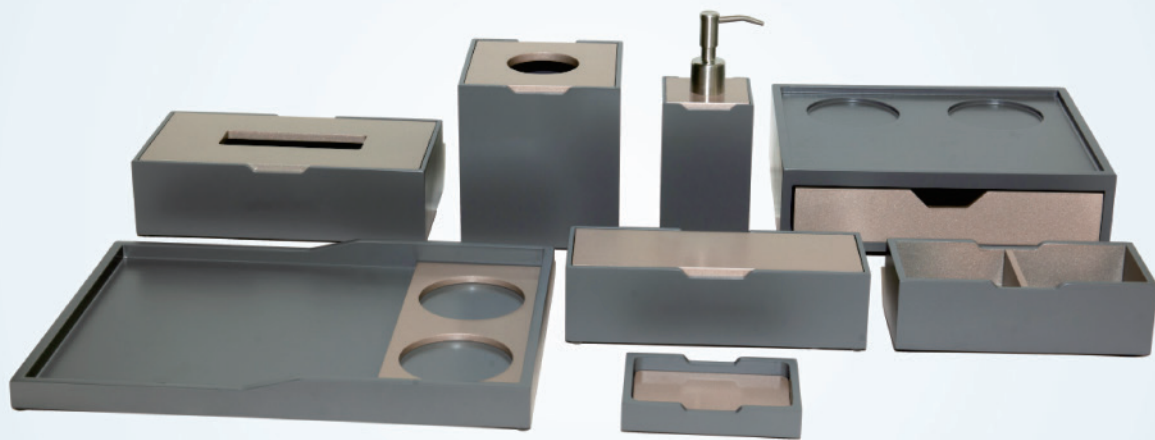
12 黑色

SFC-01

SFC-07(分隔栏一体)

产品型号 Model No.	产品名称 Model Name	颜色描述 Color	说明 Description	外观尺寸 Overall Size(mm)	每包装数量 Packing Quantity
SFC-01	塑料客房服务车	黑色	配开合式拉链布袋，8寸PP轮	1560*580*1230	1个
SFC-07	塑料客房服务车	黑色	配开合式拉链布袋，8寸PP轮	1560*580*1230	1个





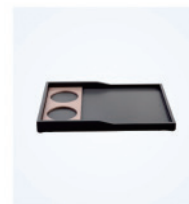
**Model.**  
R29228  
**耗品盒**  
Consumable Box  
265x205x90mm



**Model.**  
R02244  
**正方形纸巾盒**  
Square Tissue Box  
130x130x140mm



**Model.**  
R40243  
**皂碟**  
Soap Dish  
120x80x20mm



**Model.**  
R03402  
**托盘样垫**  
Tray Coaster  
355x250x20/30mm



**Model.**  
R24013  
**文具盒**  
Stationery Case  
220x80x60mm



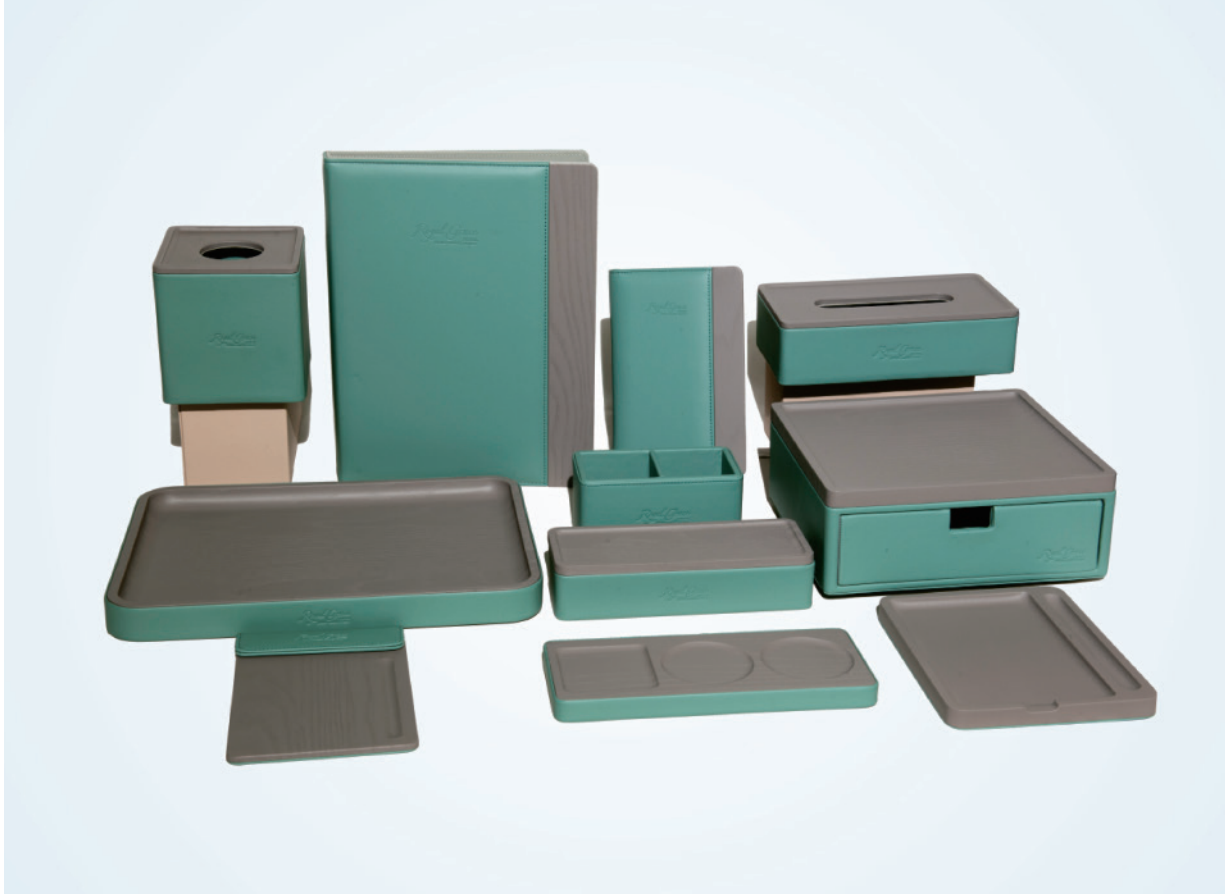
**Model.**  
R01058  
**长方形纸巾盒**  
Rectangle Tissue Box  
240x130x65mm



**Model.**  
R16028  
**双格茶叶盒**  
Tea Box  
180x80x55mm



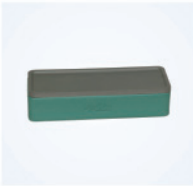
**Model.**  
R42076  
**皂液器**  
Cashier Folders  
72x72x125mm



**Model.**  
D01666  
长方形纸巾盒  
Rectangle Tissue Box  
240x130x65mm



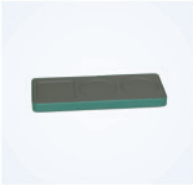
**Model.**  
D02675  
正方形纸巾盒  
Square Tissue Box  
130x130x135mm



**Model.**  
D24524  
文具盒  
Stationery Case  
220x80x50mm



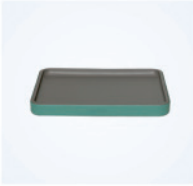
**Model.**  
D07721  
便签夹  
Memo clip  
130x195x40mm



**Model.**  
D10514  
杯垫  
Cup Mat  
245x100x15mm



**Model.**  
D16187  
双格茶叶盒  
Tea Box  
150x80x70mm



**Model.**  
D031398  
托盘  
Tray  
350x250x30mm



**Model.**  
M53030  
便签盒  
Note Box  
160x190x15mm



**Model.**  
D21584  
收银夹  
Cashier Folders  
125x210x25mm



**Model.**  
D04734  
服务指南  
Service Directory Folder  
250x327x40mm

# Perishable goods









单齿梳系列  
Single Row Comb



14x2.85CM C-01  
14x3.3CM C-02  
15.2x3.5CM C-03  
15.8x3.2CM C-04  
17.2x2.8CM C-05  
17.8x2.6CM C-06

双齿梳系列  
Double Row Comb



12.5x3CM C-07  
13.4x3CM C-08  
13.8x3.3CM C-09  
16x3.2CM C-10  
12.2x4.5CM C-11  
18.3x3.1CM C-12

木梳系列  
Wooden Comb

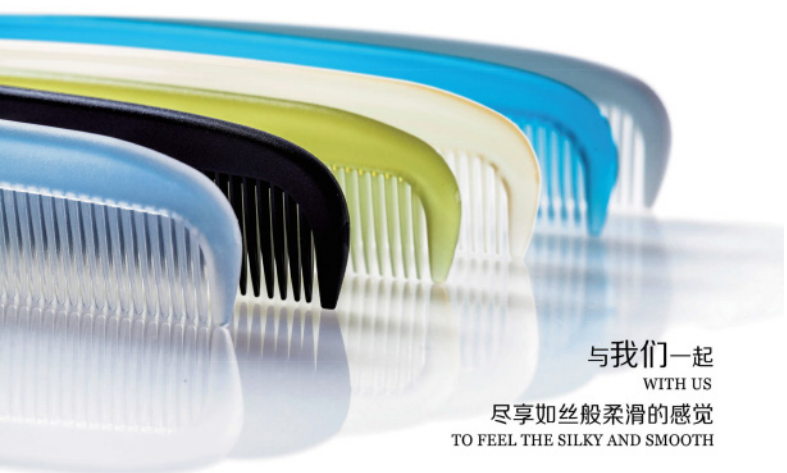


11.2x5.3CM C-13  
13.6x3CM C-14  
13.7x3CM C-15  
13.6x2.9CM C-16  
17.7x2.8CM C-17

特色梳系列  
Comb Series Features



18.3x2.6CM C-18  
18.6x2.4CM C-19  
18.3x2.6CM C-20  
18.4x2.5CM C-21  
12.9x3.5CM C-22



与我们  
WITH US  
尽享如丝般柔滑的感觉  
TO FEEL THE SILKY AND SMOOTH

折叠梳系列  
Folding Comb



9.8x3CM C-23  
12x2.5CM C-24  
9.7x2.5CM C-25  
11x2.7CM C-26  
9.3x3CM C-27

我们为满足不同客户的需求，提供国际品牌剃刀和高品质不同类型的剃刀供客人选择，让客人尽情享受剃须感受而无后顾之忧。



双层刀片无润滑条  
double blade



双层刀片带润滑条  
double blade  
with conditioning strip



三层刀片带润滑条  
triple blades



四层刀片带润滑条  
quad blade  
with conditioning strip

## 松泰兴须创(品牌)系列 Brand Razor

美国吉列 / American Gillette



S-01

S-02

美国舒适 / American Schick



S-03

S-04



S-05

法国罗斯琳 / France Rosslyn



S-06

S-07

美国阿帕奇 / American Apache



S-08

S-09

S-10

S-11

韩国多乐可 / Korea Dorco



S-12

S-13

S-14

S-15

# slipper

A variety of styles, materials and styles show the hotel's high-quality experience





**Environmental protection and sustainability:** Choosing disposable slippers made of environmentally friendly materials not only reflects the hotel's concern for the environment, but also meets modern consumers' pursuit of green and sustainable living. The application of this environmental protection concept can further enhance the hotel's sense of elegance.

**Details and packaging:** Effort can also be made in the packaging of slippers. Beautiful packaging materials such as eco-friendly paper bags or fabric bags can be used, along with the hotel's logo or greetings, to make guests feel the hotel's care and high quality when they open the packaging.

**Complementary services:** While providing disposable slippers, related services such as slipper replacement and cleaning can also be provided to make guests feel the hotel's attentiveness and professionalism during use. Such meticulous services are also an important factor in enhancing the hotel's sense of elegance.



# Banquet overall solution



Banquet overall solution, one-stop customization, to create a perfect banquet experience

In the hotel industry, the banquet is an important window to show the service and quality of the hotel. In order to meet the needs of different customers, we provide professional banquet solutions, from venue layout, tablecloth selection, tableware configuration to catering services, to create a unique banquet experience.

#### First. Banquet venue layout and planning

Depending on the size and theme of the event, we carefully plan and furnish the venue for our clients. From stage background, lighting and sound to table and chair placement, decorative flowers, every detail has been carefully designed to create an atmosphere in line with the theme of the banquet. At the same time, we fully consider the practicality and comfort of the venue to ensure that every guest can enjoy a pleasant banquet experience.

#### Second, tablecloth selection and customization

Tablecloth, as an important part of the banquet table, its selection and customization directly affect the overall effect of the banquet. According to the theme and style of the banquet, we provide a variety of materials, colors and patterns of tablecloth for customers to choose from. At the same time, we also support customers to customize their own table cloth to highlight the uniqueness and personalization of the banquet.

#### Third, tableware configuration and collocation

Cutlery is an indispensable element of a banquet. We provide high quality tableware configuration services, including plates, bowls, cups, knives and forks. In the selection of tableware, we pay attention to the perfect combination of material, technology and design, to ensure that it meets the grade and style of the banquet, and can meet the needs of guests. In addition, we also provide tableware cleaning and disinfection services to ensure the hygiene and safety of the banquet.

#### Fourth, personalized customization and value-added services

In addition to the above basic banquet services, we also provide personalized customized services and value-added services to meet the special needs of our customers. For example, we can customize exclusive banquet invitations, souvenirs, etc., to increase the commemorative value of the banquet, so that customers can cherish it forever.

Our total banquet solution is dedicated to providing customers with one-stop customized services, from venue layout to catering services, from tablecloth selection to tableware configuration, to create a perfect banquet experience. Whether it is a large wedding, celebration or business banquet, we can provide you with the best quality service and the most satisfactory results.



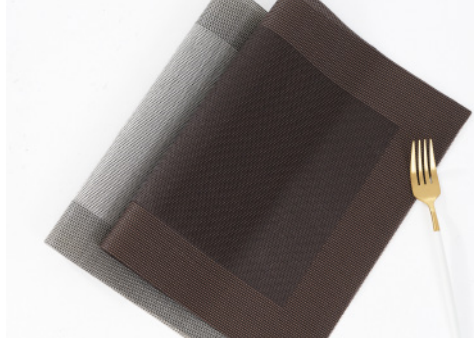






# Place Mat

Product	Napkin		
Material	100% Cotton, Polycotton or Polyester		
Size	50cm x 50cm, or Made to Order		
MOQ	200 Pieces	Color	Plain White or Made to Order
Remark	All ELIYA's table cloth fabric can be produced as napkin, chair cover, place mat , apron, etc.		



# Seramic



The ceramics in the hotel supplies have a series of unique characteristics, which not only meet the hotel's requirements for the practicality and durability of tableware, but also enhance the dining experience and show the hotel's brand image and style.

First of all, the hotel ceramic tableware has excellent high temperature resistance, can withstand high temperatures and is not easy to deformation or fracture, so it is very suitable for hot food, hot drinks and consumption. In addition, the surface of the ceramic tableware is smooth, does not absorb grease and odor, making it relatively easy to clean, and can be disinfected at high temperature to ensure health and safety.

In the material, the hotel ceramic tableware is usually made of natural inorganic materials, does not contain harmful substances to the human body, does not release harmful gases, harmless to human health. Its hard texture, high durability, not easy to wear or damage, can be used for a long time, with high durability.

In terms of aesthetics, the hotel ceramic tableware has a variety of shapes and designs, and different styles can be selected according to the style and needs of the restaurant, adding the beauty and high-level sense of the table. Exquisite ceramic tableware can allow guests to enjoy food at the same time, feel the exquisite tableware and the hotel's business culture, indirectly for the hotel to create more economic benefits.

Specific to the hotel ceramic teacups, its design also fully considers the balance of practicality and aesthetics. For example, some tea cups are designed with LIDS for easy carrying and drinking; Some have unique shapes and decorations that enhance the overall aesthetic value.

In addition, some special types of ceramics, such as magnesium reinforced porcelain, have the characteristics of delicate porcelain, milky gloss, hand touch and so on, but also has high whiteness, high strength, good light transmittance, high thermal stability and other outstanding advantages, very suitable for use in hotel supplies.

In general, the ceramics of hotel supplies with its unique high temperature resistance, easy cleaning, environmental health, durability and beautiful characteristics, become an indispensable part of the hotel industry, to provide guests with a quality dining experience.



**螺旋茶壶 (800cc Tea pot)**  
 YA5247 / 800cc / 21.8x11.2x14.8 cm  
 YA5247-1 / 盖 / 7.2x7.2x4 cm  
 YA5247-2 / 身 / 21.8x11.2x14.8 cm



**螺旋咖啡杯 (210cc Coffee cup)**  
 YA4993 / 210cc / 11.3x8.3x7.1 cm  
 YA4994 / 碟 / 14x14x1.8 cm



**螺旋茶杯 (150cc Cup)**  
 YA5248 / 150cc / 7x7x8.7 cm  
 YA5249 / 碟 / 12.7x12.7x1.8 cm



**螺旋马克杯 (350cc Mug)**  
 YA4995 / 350cc / 11.8x8.4x10.4 cm



**螺旋碗 (4.5" Bowl)**  
 YA5250 / 4.5" / 11.3x11.3x4.7 cm



**螺旋正方碗 (5" Bowl)**  
 YA4972 / 5" / 12.8x12.8x5.6 cm



**螺旋正方碗 (7" Bowl)**  
 YA4973 / 7" / 17.5x17.5x5.3 cm



**螺旋圆形盘 (Round plate)**  
 YA5201 / 7.25" / 18.3x18.3x2 cm  
 YA5202 / 8.25" / 21.2x21.2x2.3 cm  
 YA5203 / 9.25" / 23.5x23.5x2.4 cm  
 YA5204 / 10.25" / 26.1x26.1x2.6 cm  
 YA5205 / 11.25" / 28.5x28.5x2.8 cm



**螺旋正方盘 (Square plate)**  
 YA4983 / 7.5" / 18.9x18.9x1.9 cm  
 YA4984 / 8.5" / 21.4x21.4x2.3 cm  
 YA4978 / 10.5" / 26.5x26.5x2.6 cm  
 YA4985 / 12" / 30.1x30.1x2.9 cm



**螺旋方盘碗 (Round plate)**  
 YA4996 / 8" / 20.3x20.3x3.6 cm  
 YA4997 / 9" / 22.7x22.7x3.9 cm  
 YA4998 / 10" / 25.3x25.3x4 cm



新阳光谷浅式盘 (plate)  
TLB0031 / 7.5" / 19.1x16.1x2.3 cm  
TLB0032 / 8.5" / 21.9x21.9x2.3 cm



阳光谷浅盘 (plate)  
LB0016 / 8" / 20.5x20.5x4.5 cm  
LB0017 / 8" / 22.6x22.6x2 cm  
LB0018 / 10" / 25.8x25.8x3 cm



阳光谷餐盘 (plate)  
LB0002 / 5" / 12.7x12.7x1.7 cm  
LB0003 / 6.5" / 16.5x16.5x1.8 cm  
LB0004 / 7.5" / 19.3x19.3x1.9 cm  
LB0005 / 8.5" / 21.6x21.6x2.5 cm  
LB0006 / 9.5" / 24.5x24.5x2.7 cm  
LB0007 / 10.5" / 27.0x27.0x2.9 cm  
LB0008 / 11.5" / 29.5x29.5x2.7 cm  
LB0009 / 12.5" / 32.0x32.0x3 cm



阳光谷侧盘 (plate)  
LB0025 / 8" / 20.5x18.3x4.6 cm  
LB0026 / 10" / 25.7x18.3x2.7 cm  
LB0027 / 12" / 30.5x25.3x2.5 cm  
LB0028 / 14" / 36.2x25.3x2.5 cm  
LB0029 / 16" / 41.5x29.7x3 cm  
LB0030 / 18" / 46.7x32.7x4 cm  
LB0031 / 20" / 51.9x37.9x3.2 cm  
LB0015 / 32" / 83x59x7 cm



阳光谷中式茶壶 (teapot)  
LB0010 / 24.8x15.5x13 cm  
LB0010-1 / 盖 / 10x10x5.7 cm  
LB0010-2 / 身 / 24.5x10x10 cm



阳光谷茶壶 (teapot)  
LB0040 / 110x60 / 23x14.3x19.5 cm  
LB0048-1 / 盖 / 10x10x6.8 cm  
LB0048-2 / 身 / 23x14.3x14.4 cm



阳光谷咖啡壶 (coffee pot)  
LB0048 / 300cc / 15.7x8.7x14 cm  
LB0048-1 / 盖 / 7.2x7.2x4.9 cm  
LB0048-2 / 身 / 15.7x8.7x11.8 cm



阳光谷咖啡杯 (Coffee cup)  
LB0041 / 80cc / 8.7x6.4x6.8 cm  
LB0045 / 盖 / 12.7x12.7x2 cm  
LB0042 / 200cc / 10.5x9x3 cm  
LB0046 / 盖 / 14.6x14.6x2.1 cm  
LB0043 / 200cc / 11.7x8.3x8.8 cm  
LB0047 / 盖 / 16.2x16.2x2.4 cm



阳光谷特浓咖啡杯 (Coffee cup)  
LB0088 / 300cc / 11.2x8.2x6.4 cm  
LB0087 / 盖 / 14.5x14.5x1.7 cm



阳光谷无柄茶杯 (cup)  
LB0055 / 7.7x7.7x7 cm  
LB0013 / 盖 / 14x14x2 cm



阳光谷马克杯 (Mug)  
LB0044 / 350cc / 13.4x10x9.9 cm



阳光谷奶壶 (Milk jug)  
LB0062 / 300cc / 13.9x9.2x9.2 cm



阳光谷奶勺 (Milk spoon)  
LB0084 / 80cc / 6.8x5.3x7.7 cm  
LB0083 / 150cc / 10.9x7.5x7 cm



阳光谷糖盅 (Sugar cup)  
LB0054 / 6.4x6.4x4 cm  
LB0064-1 / 盖 / 6.9x6.9x3.8 cm  
LB0064-2 / 身 / 9.4x6.4x4 cm



阳光谷糖碗 (Sugar bowl)  
LB0082 / 10.9x7.4x4.8 cm



阳光谷有盖汤碗 (Soup bowl)  
LB0059 / 14.7x11.8x13.4 cm  
LB0059-1 / 盖 / 11.8x11.8x5 cm  
LB0059-2 / 身 / 14.7x11.4x6 cm



阳光谷醋壶 (Vinegar pot)  
LB0115 / 12.1x8.2x13 cm  
LB0116-1 / 盖 / 4.4x4.4x4.5 cm  
LB0116-2 / 身 / 12.1x8.2x6.3 cm



阳光谷味具 (Taste utensil)  
LB0061 / 5.7x5.7x4.4 cm  
LB0061-1 / 2S  
LB0061-2 / 5S



阳光谷牙签筒 (Toothpick holder)  
LB0090 / 4.3x4.3x6 cm



阳光谷碟 (Saucer dish)  
LB0012 / 7" / 7.9x7.9x2.2 cm



阳光谷碟 (dish)  
LB0011 / 4" / 10.5x10.5x1 cm



阳光谷翻花巾碟 (Dish)  
LB0076 / 14.1x8.2x2 cm



阳光谷毛巾碟 (Dish)  
LB0074 / 6.5" / 16.5x8.8x1.4 cm



阳光谷单用筷架 (Chopstick stand)  
LB0065 / 6.7x4.4x1.4 cm



阳光谷两用筷架 (Chopstick stand)  
LB0068 / 9.2x5.5x1.5 cm



阳光谷三用筷架 (Chopstick stand)  
LB0063 / 12.5x4.2x1.5 cm



阳光谷甜碗 (Bowl)  
LB0073 / 4.75" / 11.8x11.8x4.1 cm



阳光谷饭碗 (Bowl)  
LB0069 / 4" / 10.2x10.2x4.4 cm  
LB0070 / 4.5" / 11.3x11.3x5.3 cm  
LB0071 / 6" / 12.5x12.5x5.8 cm  
LB0072 / 6" / 15x15x7.7 cm



阳光谷汤碗 (Bowl)  
LB0058 / 3.5" / 8.9x7.9x2.5 cm  
LB0050 / 4" / 10x10x7 cm  
LB0051 / 5" / 12.7x12.7x8 cm  
LB0052 / 6" / 15.2x13.6x3 cm



阳光谷侧碗 (Bowl)  
LB0054 / 8" / 20.3x8.1x4.5 cm  
LB0056 / 10" / 25x22.3x6 cm  
LB0117 / 12" / 30x28x7.5 cm  
LB0118 / 14" / 35.3x28x7.5 cm  
LB0119 / 16" / 41.5x28x9 cm  
LB0075 / 20" / 50.7x43.4x9.8 cm



雷尔咖啡壶 (coffee pot)  
PA0030 / 800cc / 20.6x13.3x14 cm  
PA0036 / 1.5 / 16.6x8.4 cm  
PA0032 / 8 / 20.5x13.3x12.3 cm



雷尔咖啡杯 (Coffee cup)  
PA0035 / 300cc / 8.7x6.4x5.1 cm  
PA0036 / 8 / 11.5x7.1x5.1 cm  
PA0033 / 210cc / 11.3x6.4x7 cm  
PA0034 / 8 / 14.4x14.4x1.8 cm



雷尔糖盅 (Sugar cup)  
PA0031 / 8.8x6.8x3 cm  
PA0031-1 / 8.8x6.8x3.7 cm  
PA0031-2 / 8 / 8.8x6.8x8 cm



雷尔奶壶 (Milk jug)  
PA0032 / 11.3x7.4x6.7 cm



雷尔无耳茶杯 (Cup)  
PA0038 / 210cc / 7.7x7.7x7.5 cm



雷尔马克杯 (Mug)  
PA0037 / 300cc / 12.8x1.6x3 cm



雷尔方碟碟碟 (Saucer dish)  
PA0092 / 3.9" / 8.8x6.8x2.3 cm  
PA0093 / 4.7" / 11.8x11.8x3.7 cm



雷尔长条碗 (Bowl)  
PA0040 / 8" / 23.8x6.8x3 cm  
PA0041 / 11" / 28.3x6.8x3.7 cm  
PA0042 / 12" / 33.2x6.8x4.3 cm



雷尔方圆碗碟 (Bowl)  
PA0075 / 9" / 12.8x12.8x4.5 cm



雷尔碗碟 (Bowl)  
PA0086 / 4.5" / 11.4x11.4x4.5 cm



雷尔碗碟碟 (Bowl)  
PA0100 / 4.9" / 11.3x11.3x4.6 cm  
PA0101 / 6.2" / 13.5x13.5x7.3 cm



雷尔碗碟 (Bowl)  
PA0076 / 9" / 12.8x12.8x4.5 cm



雷尔碗 (Bowl)  
PA0022 / 5.5" / 14.3x14.3x4.1 cm



雷尔碗碟 (Bowl)  
PA0088 / 7" / 17.8x17.8x4 cm



雷尔沙拉碗 (Bowl)  
PA0039 / 11" / 28.2x28.2x13 cm



雷尔碗碟碟 (Bowl)  
PA0043 / 5.5" / 13.8x13.8x4.9 cm  
PA0044 / 7" / 18.1x18.1x5.3 cm  
PA0045 / 9" / 22.7x17.8x6.6 cm  
PA0046 / 11" / 27.7x22.7x8 cm  
PA0047 / 12" / 32.8x28.8x9 cm



雷尔方碗碟碟 (Bowl)  
PA0082 / 7" / 17.8x17.8x4.6 cm  
PA0083 / 8" / 20.1x20.1x5.3 cm  
PA0084 / 9" / 23.8x23.8x6 cm  
PA0085 / 10" / 25.5x25.5x6.9 cm  
PA0086 / 12" / 30.1x30.1x8.3 cm



雷尔碗碟 (Bowl)  
PA0016 / 7" / 17.7x17.7x3.8 cm  
PA0017 / 8" / 20.3x20.3x4.4 cm  
PA0018 / 9" / 23.8x23.8x5.3 cm  
PA0019 / 10" / 25.5x25.5x6.8 cm  
PA0020 / 11" / 27.7x27.7x8.1 cm  
PA0021 / 12" / 30.1x30.1x9.6 cm



雷尔碗碟 (Bowl)  
PA0025 / 7" / 18.1x8.4 cm  
PA0026 / 8" / 20.5x20.5x2.2 cm  
PA0027 / 9" / 23.1x23.1x3 cm  
PA0028 / 10" / 25.5x25.5x7.8 cm  
PA0029 / 11" / 27.7x27.7x8.6 cm  
PA0029 / 12" / 30.1x30.1x9.7 cm



雷尔双耳大碗 (Bowl)  
PA0082 / 12" / 33.6x30.1x8.8 cm  
PA0083 / 14" / 40.4x35.9x10.7 cm  
PA0084 / 16" / 46.4x41.7x11.1 cm



雷尔方碟碟碟 (Plate)  
PA0084 / 6.7" / 14.3x14.3x3.3 cm  
PA0085 / 8.1" / 18.7x18.7x3.8 cm



雷尔碟碟 (Plate)  
PA0022 / 7" / 17.8x17.8x1.8 cm  
PA0001 / 7.5" / 18.8x18.8x1.9 cm  
PA0003 / 8" / 20.2x20.2x1.9 cm  
PA0006 / 10" / 25.5x25.5x2.2 cm  
PA0008 / 11" / 27.7x27.7x2.6 cm  
PA0007 / 12" / 30.4x30.4x2.8 cm  
PA0008 / 14" / 35.3x35.3x3.3 cm



雷尔正方形 (Plate)  
PA0048 / 7.5" / 18.8x18.8x2 cm  
PA0050 / 8.25" / 20.8x20.8x2.2 cm  
PA0051 / 9.25" / 23.2x23.2x2.3 cm  
PA0052 / 10.25" / 26.1x26.1x2.4 cm  
PA0080 / 11" / 28.1x28.1x2.3 cm  
PA0003 / 12" / 30.5x30.5x2.3 cm  
PA0054 / 14" / 35.6x35.6x2.8 cm



雷尔长方形 (Plate)  
PA0055 / 10" / 25.5x13.3x2 cm  
PA0057 / 12" / 30.5x16.7x2.4 cm  
PA0058 / 14" / 35.5x19.3x2.7 cm  
PA0059 / 16" / 40.8x22.4x3 cm  
PA0060 / 18" / 45.8x25.3x3 cm



**天斗长方形盘 (plate)**  
 YH0053 / 8" / 20.5x13.7x2 cm  
 YH0054 / 10" / 25x15.5x2 cm  
 YH0055 / 10" / 25.5x17.5x2 cm  
 YH0056 / 12" / 30.5x20.5x2 cm  
 YH0057 / 12" / 30.5x23.5x2 cm  
 YH0058 / 14" / 35.5x25.5x2 cm  
 YH0059 / 14" / 35.5x28.5x2 cm  
 YH0060 / 16" / 40.5x30.5x2 cm

**天斗正方形盘 (plate)**  
 YH0047 / 6.5" / 16.5x16.5x2 cm  
 YH0048 / 8.5" / 21.5x21.5x2 cm  
 YH0049 / 10.5" / 26.5x26.5x2 cm  
 YH0050 / 12.5" / 31.5x31.5x2 cm  
 YH0051 / 14.5" / 36.5x36.5x2 cm  
 YH0052 / 16.5" / 41.5x41.5x2 cm

**天斗圆形盘 (plate)**  
 YH0053 / 7" / 18x17.7x2 cm  
 YH0054 / 8" / 20.5x19.5x2 cm  
 YH0055 / 10" / 25.5x23.5x2 cm  
 YH0056 / 12" / 30.5x27.5x2 cm  
 YH0057 / 14" / 35.5x31.5x2 cm  
 YH0058 / 16" / 40.5x35.5x2 cm  
 YH0059 / 18" / 45.5x39.5x2 cm  
 YH0060 / 20" / 50.5x43.5x2 cm

**天斗盘 (plate)**  
 YH0051 / 8" / 12.5x12.5x1.6 cm  
 YH0052 / 9" / 13.5x13.5x1.6 cm  
 YH0053 / 10" / 14.5x14.5x1.6 cm  
 YH0054 / 11" / 15.5x15.5x1.6 cm  
 YH0055 / 12" / 16.5x16.5x1.6 cm  
 YH0056 / 13" / 17.5x17.5x1.6 cm  
 YH0057 / 14" / 18.5x18.5x1.6 cm  
 YH0058 / 15" / 19.5x19.5x1.6 cm  
 YH0059 / 16" / 20.5x20.5x1.6 cm  
 YH0060 / 17" / 21.5x21.5x1.6 cm



**天斗咖啡壶 (Coffee pot)**  
 YH0098 / 200cc / 18x10x13 cm  
 YH0099 / 1 盖 / 7.5x5 cm  
 YH0098-2 / 盖 / 15.5x8.5x11 cm

**天斗有柄咖啡杯 (Coffee cup)**  
 YH0080 / 220cc / 13.5x11.7x7 cm  
 YH0082 / 碟 / 17x7x2.4 cm

**天斗有柄茶杯 (Cup)**  
 YH0077 / 80cc / 8.5x6.5x7.5 cm  
 YH0084 / 碟 / 12x7x2.5 cm  
 YH0079 / 80cc / 10x7.5x6 cm  
 YH0083 / 碟 / 14.5x14.5x2.5 cm

**天斗有柄口杯 (Cup)**  
 YH0079 / 200cc / 11.5x9x10.3 cm

**天斗茶具 (Cup)**  
 YH0081 / 500cc / 12x9x14.2 cm



**天斗有柄奶勺 (Milk jug)**  
 YH0096 / 6-8 / 10x7.5x8 cm  
 YH0099 / 大号 / 11.5x8x10.5 cm

**天斗碟碗 (Saucer dish)**  
 YH0111 / 3.5" / 8x9x3.2 cm

**天斗碟碗 (Saucer dish)**  
 YH0110 / 2.75" / 7.3x7.3x2.4 cm

**天斗蛋杯 (Egg cup)**  
 YH0091 / 5x5x4 cm

**天斗餐具 (Taste utensil)**  
 YH0093 / 3x5x5 cm  
 YH0095 / 碟碗 / 130x16.3x5.7x6.5 cm  
 YH0094 / 碟碗 / 21.5x8.8x1.3 cm



**天斗方形深碗 (Bowl)**  
 YH0115 / 3" / 7.5x7.5x4.3 cm  
 YH0073 / 深碗 / 10.5" / 25.7x8.5x4.3 cm

**天斗二连碗 (Bowl)**  
 YH0095 / 6" / 10.5x8.5x2.2 cm

**天斗四方汤碗 (Soup bowl)**  
 YH0125 / 6" / 20.3x20.3x15 cm  
 YH0126 / 8" / 23x23x16 cm  
 YH0127 / 10" / 26x26x17 cm

**天斗汤盘 (Soup plate)**  
 YH0035 / 4" / 10x10x3 cm  
 YH0036 / 5" / 12.5x12.5x3 cm  
 YH0037 / 6" / 15.2x15.2x3.1 cm  
 YH0031 / 7" / 17.5x17.5x3.1 cm  
 YH0032 / 8" / 20.2x20.2x3.2 cm  
 YH0033 / 9" / 22.7x22.7x3.2 cm  
 YH0034 / 10" / 25.5x25.5x3.3 cm  
 YH0074 / 11" / 28x28x3.5 cm  
 YH0035 / 12" / 30.3x30.3x3.5 cm



**天斗方形深碗 (Bowl)**  
 YH0115 / 3" / 7.5x7.5x4.3 cm  
 YH0116 / 4" / 10x10x5 cm  
 YH0117 / 5" / 12x12x5.5 cm  
 YH0118 / 6" / 14.7x14.7x7.7 cm  
 YH0119 / 7" / 17.3x17.3x8.3 cm  
 YH0120 / 8" / 20x20x8.5 cm  
 YH0122 / 10" / 26x26x9 cm

**天斗深碗 (Bowl)**  
 YH0023 / 4" / 10.2x10.2x6.5 cm  
 YH0024 / 5" / 12.5x12.5x7.3 cm  
 YH0025 / 6" / 15x15x7.7 cm  
 YH0026 / 7" / 17.5x17.5x8.3 cm  
 YH0027 / 8" / 20.5x20.5x8.8 cm  
 YH0028 / 9" / 23x23x9.2 cm  
 YH0029 / 10" / 25.5x25.5x9.6 cm  
 YH0030 / 12" / 30.3x30.3x10.5 cm

**天斗斜口碗 (Bowl)**  
 YH0039 / 4" / 9.5x8.5x5 cm  
 YH0040 / 5" / 12.3x12.3x5.8 cm  
 YH0041 / 6" / 14.8x14.8x6.5 cm  
 YH0042 / 7" / 17.5x17.5x7.5 cm  
 YH0043 / 8" / 20x20x8.5 cm  
 YH0044 / 9" / 22.5x22.5x9.5 cm  
 YH0045 / 10" / 25x25x10.5 cm  
 YH0046 / 11" / 27.3x27.3x11.5 cm

**天斗浅碗 (Bowl)**  
 YH0090 / 3.5" / 8.8x8.8x3.6 cm  
 YH0012 / 4" / 10.2x10.2x3.7 cm  
 YH0013 / 5" / 12.5x12.5x3.8 cm  
 YH0014 / 6" / 15.2x15.2x3.8 cm  
 YH0015 / 7" / 17.5x17.5x3.8 cm  
 YH0016 / 8" / 20.2x20.2x3.8 cm  
 YH0017 / 9" / 22.8x22.8x3.8 cm  
 YH0018 / 10" / 25.5x25.5x3.8 cm  
 YH0019 / 11" / 28.2x28.2x3.8 cm  
 YH0020 / 12" / 30.7x30.7x3.8 cm  
 YH0021 / 14" / 35.7x35.7x3.8 cm  
 YH0022 / 16" / 40.7x40.7x3.8 cm





织纹直身咖啡杯 (Coffee cup)  
PQ0030 / 180cc / 11.5x8.5x6.4 cm  
PQ0031 / 碟 / 15.1x15.1x1.8 cm



织纹直身咖啡杯 (Coffee cup)  
PQ0028 / 90cc / 8.2x6.1x5.7 cm  
PQ0029 / 碟 / 11.4x11.4x1.3 cm



织纹无耳直身杯 (cup)  
PQ0032 / 300cc / 7.8x7.8x6.5 cm



织纹深碗 (bowl)  
PQ0016 / 5' / 12.6x12.6x6.5 cm



织纹汤碗 (bowl)  
PQ0038 / 6.25' / 18x16x6.4 cm



织纹浅碗 (bowl)  
PQ0023 / 6.75' / 22.1x22.1x4.6 cm  
PQ0025 / 10.75' / 28.8x28.8x4.1 cm



织纹汤盘 (Soup plate)  
PQ0020 / 9' / 22.9x22.9x4.3 cm  
PQ0021 / 10' / 25.4x25.4x4.4 cm



织纹意粉盘 (Pasta plate)  
PQ0047 / 11' / 27.9x27.9x7.5 cm



织纹圆盘 (Plate)  
PQ0040 / 13' / 32.6x23.2x2.9 cm  
PQ0041 / 15' / 37.6x26.7x3.3 cm



织纹平盘 (Flat plate)  
PQ0009 / 6.5' / 21.5x21.5x1.5 cm  
PQ0011 / 10.25' / 26.1x26.1x1.8 cm  
PQ0012 / 11' / 27.9x27.9x2.1 cm  
PQ0013 / 12' / 30.5x30.5x2.1 cm



织纹浅盘 (Plate)  
PQ0001 / 7.25' / 18.8x18.8x2.1 cm  
PQ0002 / 8.25' / 21.2x21.2x2.3 cm  
PQ0003 / 8.25' / 23.7x23.7x2.4 cm  
PQ0004 / 10.25' / 26.1x26.1x3 cm  
PQ0005 / 11.25' / 28.9x28.9x3.3 cm



织纹位上碟 (Plate)  
PQ0045 / 11' / 28.28x28.28 cm



# Glass / Wine Glass Set.

When choosing the glass, the hotel will take a variety of considerations to ensure that the glass meets the style and positioning of the hotel, but also meets the needs of guests and provides a quality experience. The following are some of the main thinking factors when choosing a glass:

**Design and style:** The design of the glass should be in harmony with the overall style and decoration of the hotel. Whether it is modern simplicity, traditional classic or luxury style, you should choose the matching glass style to create a harmonious and unified atmosphere.

**Material and safety:** The material of the glass is crucial, and the hotel usually chooses safe, environmentally friendly and non-toxic materials. At the same time, the heat resistance and drop resistance of the glass are also factors that need to be considered to ensure that it is not easy to break or deformation during use and ensure the safety of guests.

**Function:** The hotel should choose glasses with corresponding functions according to different areas and uses. For example, a room may choose a glass that is easy to clean and resistant to dropping, while a bar or restaurant may need to choose a more decorative and versatile glass.

**Brand and quality:** Choosing well-known brands and reliable quality glass suppliers can ensure the quality and durability of glasses. This helps to reduce the frequency of replacement and maintenance costs, and improve the efficiency of the hotel's operation.

**Cleaning and maintenance:** The cleaning and maintenance of the glass is also a factor that the hotel needs to consider. Choosing glasses that are easy to clean and not easy to leave stains can reduce the cleaning workload and improve work efficiency.

**Cost-effectiveness:** Under the premise of meeting the above requirements, the hotel also needs to consider the cost-effectiveness of the glass. Through reasonable procurement and inventory management, the procurement cost of the glass can be reduced and the profitability of the hotel can be improved.

# AUTHENTIS 生活家



<b>BURGUNDY GLASS</b> 勃艮第杯	<b>BORDEAUX GLASS</b> 波尔多杯	<b>RED WINE GLASS</b> 红葡萄酒杯	<b>WHITE WINE GLASS</b> 白葡萄酒杯	<b>CHAMPAGNE FLUTE</b> 笛形香槟酒杯	<b>CHAMPAGNE</b> 香槟酒杯
#4408000 750ml H: 220mm Ø: 106mm	#4408035 650ml H: 232mm Ø: 96mm	#4408001 480ml H: 218mm Ø: 89mm	#4408002 420ml H: 210mm Ø: 85mm	#4408007 190ml H: 225mm Ø: 56mm	#4408029 270ml H: 220mm Ø: 70mm



<b>WHITE WINE SMALL</b> 长相思白酒杯	<b>MINERAL WATER</b> 水杯	<b>DIGESTIVE</b> 蒸馏烈酒杯	<b>TASTING</b> 品酒杯	<b>BLIND TASTING</b> 盲品杯
#4408003 360ml H: 200mm Ø: 81mm	#4408011 340ml H: 184mm Ø: 76mm	#4408030 170ml H: 188mm Ø: 62mm	#4408031 320ml H: 186mm Ø: 77mm	#4403731 340ml H: 180mm Ø: 77mm

# AUTHENTIS CASUAL 休闲生活家



<b>BURGUNDY</b> 勃艮第杯	<b>BORDEAUX</b> 波尔多杯	<b>RED WINE</b> 红葡萄酒杯	<b>WHITE WINE</b> 白葡萄酒杯	<b>WATER TUMBLER RED</b> 红色水杯	<b>WATER TUMBLER ORANGE</b> 橙色水杯
#4808000 625ml H: 119mm Ø: 103mm	#4808035 630ml H: 129mm Ø: 96mm	#4808001 460ml H: 112mm Ø: 89mm	#4808002 420ml H: 109mm Ø: 85mm	#4805001 460ml H: 112mm Ø: 89mm	#4808001.008 460ml H: 112mm Ø: 89mm

# 雅典娜品尚 ADINA PRESTIGE



<b>BURGUNDY GLASS</b> 勃艮第杯	<b>BORDEAUX GLASS</b> 波尔多杯	<b>RED WINE GLASS</b> 红葡萄酒杯	<b>WHITE WINE GLASS</b> 白葡萄酒杯	<b>CHAMPAGNE FLUTE</b> 笛形香槟酒杯
#4908000 615ml H: 242mm Ø: 108mm	#4908035 650ml H: 261mm Ø: 99mm	#4908001 435ml H: 246mm Ø: 85mm	#4908002 370ml H: 233mm Ø: 80mm	#4908007 160ml H: 263mm Ø: 56mm



<b>CHAMPAGNE FLUTE</b> 笛形香槟酒杯	<b>MARTINI</b> 鸡尾酒杯	<b>PILSNER</b> 啤酒杯
#4908029 245ml H: 239mm Ø: 71mm	#4908011 340ml H: 174mm Ø: 83mm	#4908019 470ml H: 205mm Ø: 89mm

# 新世纪 HYBRID



<b>BURGUNDY GLASS</b> 勃艮第杯	<b>BORDEAUX GLASS</b> 波尔多杯	<b>WHITE WINE GLASS</b> 白葡萄酒杯	<b>CHAMPAGNE</b> 香槟酒杯	<b>CHAMPAGNE FLUTE</b> 笛形香槟酒杯
#4328000 840ml H: 240mm Ø: 122mm	#4328035 680ml H: 240mm Ø: 105mm	#4328032 550ml H: 240mm Ø: 88mm	#4328001 380ml H: 240mm Ø: 79.5mm	#4328029 280ml H: 240mm Ø: 70mm



## SOIREE 盛宴

## 奥斯陆 OSLO



## 礼敬 SALUTE



## 爱酒仕 WINE LOVERS



# PERFECT 完美品鉴



LONGDRINK GLASS  
长饮杯

#4508019  
350ml  
H: 150mm  
Ø: 71mm



D.O.F. GLASS  
大古典杯

#4508016  
368ml  
H: 100mm  
Ø: 86mm



SMALL LONGDRINK GLASS  
小长饮杯

#4508012  
240ml  
H: 100mm  
Ø: 72mm



S.O.F. GLASS  
小古典杯

#4508017  
270ml  
H: 81mm  
Ø: 82mm



PERFECT SHOT GLASS  
小烈酒杯

#4508020  
55ml  
H: 90mm  
Ø: 40mm



WHISKY DECANTE  
酒樽

#4500158  
750ml  
H: 242mm  
Ø: 131mm



LARGE MIXING GLASS  
大混饮杯

#4500153  
750ml  
H: 180mm  
Ø: 101mm



MIXING GLASS  
混饮杯

#4500152  
637ml  
H: 158mm  
Ø: 99mm



NOSING GLASS  
闻香杯

#4508018  
205ml  
H: 120mm  
Ø: 82mm



COUPEE GLASS  
鸡尾酒杯

#4508008  
235ml  
H: 140mm  
Ø: 91mm



COCKTAIL GLASS  
马天尼杯

#4508025  
165ml  
H: 140mm  
Ø: 103mm



TASTING GLASS  
品酒杯

#4508031  
210ml  
H: 160mm  
Ø: 68mm



LARGE COCKTAIL  
大鸡尾酒杯

#4508033  
195ml  
H: 170mm  
Ø: 118mm



WINE GLASS  
红酒杯

#4508002  
420ml  
H: 210mm  
Ø: 85mm



CHAMPAGNE  
香槟酒杯

#4508029  
240ml  
H: 200mm  
Ø: 66mm



SHOT GLASS  
烈酒杯

#4508041  
80ml  
H: 63mm  
Ø: 63mm



PERFECT TUMBLER  
平底水杯

#4508042  
200ml  
H: 87mm  
Ø: 82mm



HIGHBALL GLASS  
海波杯

#4508014  
300ml  
H: 124mm  
Ø: 84mm



## COCKTAIL 经典鸡尾酒



MARTINI  
鸡尾酒杯

#1418025  
260ml  
H: 210mm  
Ø: 112mm



MARTINI  
鸡尾酒杯

#4518025  
195ml  
H: 174mm  
Ø: 117mm



CHAMPOGN  
勃艮第杯

#4518008  
288ml  
H: 160mm  
Ø: 100mm



MARTINI  
鸡尾酒杯

#4078025  
175ml  
H: 148mm  
Ø: 101mm



DOUBLR COCKTAIL  
鸡尾酒杯

#4078031  
300ml  
H: 172mm  
Ø: 120mm



MARTINI  
鸡尾酒杯

#4718025  
250ml  
H: 168mm  
Ø: 111mm



COUPETTE GLASS  
鸡尾酒杯

#4508008  
235ml  
H: 140mm  
Ø: 91mm



COUPETTE GLASS  
鸡尾酒杯

#4508025  
165ml  
H: 140mm  
Ø: 103mm



COUPETTE GLASS  
鸡尾酒杯

#4508033  
195ml  
H: 170mm  
Ø: 118mm



COUPETTE  
鸡尾酒杯

#2648025  
270ml  
H: 118mm  
Ø: 130mm



MARGARITA  
玛格丽特酒杯

#4518033  
340ml  
H: 185mm  
Ø: 121mm



GIN&TONIC GLASS  
烈酒杯

#4398039  
630ml  
H: 195mm  
Ø: 106mm



EXOTICDRINK  
特饮杯

#4108030  
360ml  
H: 150mm  
Ø: 84mm



TROPICAL-DRINK  
特饮杯

#4108031  
530ml  
H: 183mm  
Ø: 90mm



## WATER GLASSES 高脚水杯



MINERAL WATER 水杯	PILSNER 啤酒杯	MINERAL WATER 水杯	PILSNER 啤酒杯	MINERAL WATER 水杯	PILSNER 啤酒杯
#4518011 340ml H: 164mm Ø: 79mm	#4518024 368ml H: 178mm Ø: 73mm	#4078021 400ml H: 154mm Ø: 83mm	#4078024 375ml H: 168mm Ø: 73mm	#4028011 275ml H: 137mm Ø: 71mm	#4028024 400ml H: 162mm Ø: 77mm

## HIGHBALL & LONG DRINK 海波杯 & 长饮杯



TUMBLER L 平底水杯	HIGHBALL 海波杯	ON THE ROCKS 洛杯	LONGDRINK 长饮杯	LONGDRINK 长饮杯
#4678009 510ml H: 130mm Ø: 83mm	#4518013 310ml H: 146mm Ø: 63mm	#4518009 325ml H: 128mm Ø: 69mm	#4028012 350ml H: 156mm	#4078012 413ml H: 158mm Ø: 68mm



HIGHBALL 海波杯	TUMBLER 平底水杯	JUICE GLASS 果汁杯	CLUB HIGHBALL 海波杯	CLUB SOFDRINK 软饮杯
#4078013 342ml H: 144mm Ø: 64mm	#4078009 336ml H: 127mm Ø: 69mm	#4078014 218ml H: 105mm Ø: 63mm	#2660113 350ml H: 146mm Ø: 72mm	#2668014 290ml H: 117mm Ø: 71.4mm



LONGDRINK 长饮杯	SMALL LONGDRINK GLASS 小长饮杯	LIQUEUR TUMBLER 多用酒杯	LONGDRINK 长饮杯	BRANDY 白兰地杯
#4508019 350ml H: 150mm Ø: 71mm	#4508012 240ml H: 100mm Ø: 72mm	#2648031 171ml H: 135mm Ø: 58mm	#2648012 360ml H: 170mm Ø: 74mm	#2758012 445ml H: 151mm Ø: 77mm

# DECANTER

醒酒器



RED & WHITE  
红白醒酒器

#8920188  
1000ml  
H: 227mm  
Ø: 215mm



PISA 1.0L  
天鹅醒酒器 1.0L

#7930057  
1000ml  
H: 258mm  
Ø: 195mm



PISA 1.5L  
天鹅醒酒器 1.5L

#7930059  
1500ml  
H: 290mm  
Ø: 223mm



WHISKY DECANTER  
酒樽

#4500158  
750ml  
H: 242mm  
Ø: 131mm



WILLSBERGER  
威尔斯醒酒器

#1416159  
750ml  
H: 270mm  
Ø: 160mm



AUTHENTIS CASUAL  
休闲生活家醒酒器

#4800188  
1400ml  
H: 240mm  
Ø: 135mm



# 酒瓶 KARAFFE



ORIGIN  
本源醒酒器

#7550159  
750ml  
H: 43.5mm  
Ø: 21.5mm



AUTHENTIS  
生活家醒酒器 1.0L

#7240257  
1000ml  
H: 295mm  
Ø: 228mm



AUTHENTIS  
生活家醒酒器 1.5L

#7240059  
1500ml  
H: 318mm  
Ø: 245mm



NAPOLI  
宝爵醒酒器

#7180159  
1500ml  
H: 245mm  
Ø: 235mm



SOIREE  
盛宴醒酒器

#7100057  
1000ml  
H: 245mm  
Ø: 173mm



VION GRANDE  
品酒家醒酒器

#7480159  
1000ml  
H: 306mm  
Ø: 140mm



KARAFFE  
酒瓶

#9008055  
600ml  
H: 220mm  
Ø: 82mm



KARAFFE  
酒瓶

#9008057  
1100ml  
H: 260mm  
Ø: 97mm



KARAFFE  
酒瓶

#7110155  
100ml  
H: 163mm  
Ø: 61mm



KARAFFE  
酒瓶

#7110157  
250ml  
H: 209mm  
Ø: 82mm



KARAFFE  
酒瓶

#7110158  
500ml  
H: 256mm  
Ø: 100mm



KARAFFE WITH POURING  
MARK 刻度分酒器

#9348357  
330ml  
H: 205mm  
Ø: 56mm



BERRIES  
宝石醒酒器

#7160157  
1000ml  
H: 295mm



HIGHLINE DECANTER  
海末恩醒酒器

#7580157  
750ml  
H: 260mm  
Ø: 265mm



ROME DECANTER  
罗马醒酒器

#7530159  
1500ml  
H: 256mm  
Ø: 181mm



TOSCANA  
托斯卡纳醒酒器

#7430059  
1500ml  
H: 272mm  
Ø: 250mm



VION GRANDE 1.5L  
品酒家醒酒器 1.5L

#7060157  
1500ml  
H: 233mm  
Ø: 224mm



VION GRANDE 1.0L  
品酒家醒酒器 1.0L

#7060159  
1000ml  
H: 200mm  
Ø: 194mm



DECANTER ONDA,  
0.75L

#9350159  
750ml  
H: 265mm  
Ø: 160mm



GRAAL  
优雅醒酒器

#5250250  
1000ml  
H: 245mm  
Ø: 170mm



GRAND PALAIS EXQUISIT  
鉴赏家品酒家

#7080059  
1500ml  
H: 252mm  
Ø: 205mm



UP&DOWN DECANTER  
闹趣醒酒器

#7970157  
750ml  
H: 360mm  
Ø: 150mm



LOOP  
乐音醒酒器

#8900187  
1550ml  
H: 370mm  
Ø: 160mm



HYBRID  
新世纪醒酒器

#4320189  
1800ml  
H: 270mm  
Ø: 164mm

# Cooking utensil

Outside kitchen Chafing dish



B1607蒂雅系列



主餐刀 Table Knife  
230mm



主餐叉 Table Fork  
205mm



主餐更 Table Spoon  
205mm



汤更 Soup Spoon  
184mm



牛扒刀 Steak Knife  
228mm



甜品刀 Dessert Knife  
205mm



甜品叉 Dessert Fork  
188mm



甜品更 Dessert Spoon  
188mm



沙律更 Salad Spoon  
198mm



沙律叉 Salad Fork  
198mm



鱼刀 Fish Knife  
211mm



鱼叉 Fish Fork  
186mm



长冰更 Ice Spoon  
210mm



茶更 Tea Spoon  
140mm



饼叉 Cake Fork  
138mm



水果叉 Fruit Fork  
141mm



咖啡更 Coffee Spoon  
120mm



牛油刀 Butter Knife  
156mm



分菜更 Divide Food Spoon  
212mm



服务叉 Serving Fork  
240mm



服务更 Serving Spoon  
230mm

B1310 倾城系列



主餐刀 Table Knife  
243mm



主餐叉 Table Fork  
208mm



主餐更 Table Spoon  
201mm



汤更 Soup Spoon  
182mm



牛扒刀 Steak Knife  
243mm



甜品刀 Dessert knife  
221mm



甜品叉 Dessert Fork  
189mm



甜品更 Dessert Spoon  
185mm



沙律更 Salad Spoon  
191mm



沙律叉 Salad Fork  
190mm



鱼刀 Fish Knife  
206mm



鱼叉 Fish Fork  
204mm



长冰更 Ice Spoon  
210mm



茶更 Tea Spoon  
147mm



饼叉 Cake Fork  
145mm



水果叉 Fruit Fork  
145mm



雪糕更 Ice Cream Spoon  
132mm



咖啡更 Coffee Spoon  
112mm



牛油刀 Butter Knife  
149mm



分菜更 Divide Food Spoon  
200mm

B1710小蛮腰系列



主餐刀 Table Knife  
224mm



主餐叉 Table Fork  
199mm



主餐更 Table Spoon  
197mm



汤更 Soup Spoon  
186mm



牛扒刀 Steak Knife  
224mm



甜品刀 Dessert knife  
202mm



甜品叉 Dessert Fork  
184mm



甜品更 Dessert Spoon  
181mm



长冰更 Ice Spoon  
205mm



茶更 Tea Spoon  
149mm



饼叉 Cake Fork  
145mm



水果叉 Fruit Fork  
144mm



咖啡更 Coffee Spoon  
135mm



牛油刀 Butter Knife  
163mm



筷子 Chopstick  
232mm



B1712 青龙砂光



主餐刀 Table Knife  
224mm



主餐叉 Table Fork  
201mm



主餐更 Table Spoon  
201mm



汤更 Soup Spoon  
187mm



甜品刀 Dessert knife  
201mm



甜品叉 Dessert Fork  
185mm



甜品更 Dessert Spoon  
182mm



长冰更 Ice Spoon  
206mm



茶更 Tea Spoon  
150mm



饼叉 Cake Fork  
145mm



水果叉 Fruit Fork  
139mm



咖啡更 Coffee Spoon  
133mm



牛油刀 Butter Knife  
162mm



筷子 Chopstick  
233mm

### 马克光身全钢伸缩保温灯

货号	产品规格	功率
122177	Φ250×H175	220V/250W



### 不锈钢榄形大灯罩配灯

货号	产品规格	功率	型号
140323	Φ250×150	175W	CL-250



### 不锈钢玫瑰金榄形大灯罩配灯

货号	产品规格	功率	型号
140324	Φ250×150	175W	CL-250GR

### 马克光身镀金伸缩保温灯

货号	产品规格	功率
122178	Φ250×H175	220V/250W



### 不锈钢榄形小灯罩配灯

货号	产品规格	功率	型号
140321	Φ175×150	175W	CL-175



### 不锈钢玫瑰金榄形小灯罩配灯

货号	产品规格	功率	型号
140322	Φ175×150	175W	CL-175GR

### 马克光身黑金伸缩保温灯

货号	产品规格	功率
122179	Φ250×H175	220V/250W



### 不锈钢锥形小灯罩配灯

货号	产品规格	功率	型号
140327	Φ150×162	175W	CC-150



### 不锈钢玫瑰金锥形小灯罩配灯

货号	产品规格	功率	型号
140328	Φ150×162	175W	CC-150GR



CE

### 和风不锈钢热饮桶套装 SGS

货号	产品规格	容量	备注
380111	330×220×H385	4L	220V/500W
380112	330×220×H440	6L	220V/500W
380113	330×220×H495	8L	220V/500W
380114	380×270×H420	10L	220V/500W
380115	380×270×H490	12L	220V/500W
380116	380×270×H565	14L	220V/500W



### 和风不锈钢冷饮桶套装 SGS

货号	产品规格	容量	备注
480111	330×220×H385	4L	需选配冰管
480112	330×220×H440	6L	需选配冰管
480113	330×220×H495	8L	需选配冰管
480114	380×270×H420	10L	需选配冰管
480115	380×270×H490	12L	需选配冰管
480116	380×270×H565	14L	需选配冰管



CE

### 和风不锈钢热饮桶套装 SGS

货号	产品规格	容量	备注
380131	330×220×H385	4L	220V/500W
380132	330×220×H440	6L	220V/500W
380133	330×220×H495	8L	220V/500W
380134	380×270×H420	10L	220V/500W
380135	380×270×H490	12L	220V/500W
380136	380×270×H565	14L	220V/500W



### 和风不锈钢冷饮桶套装 SGS

货号	产品规格	容量	备注
480131	330×220×H385	4L	需选配冰管
480132	330×220×H440	6L	需选配冰管
480133	330×220×H495	8L	需选配冰管
480134	380×270×H420	10L	需选配冰管
480135	380×270×H490	12L	需选配冰管
480136	380×270×H565	14L	需选配冰管



CE

### 和风不锈钢热饮桶套装 SGS

货号	产品规格	容量	备注
380121	330×220×H385	4L	220V/500W
380122	330×220×H440	6L	220V/500W
380123	330×220×H495	8L	220V/500W
380124	380×270×H420	10L	220V/500W
380125	380×270×H490	12L	220V/500W
380126	380×270×H565	14L	220V/500W



### 和风不锈钢冷饮桶套装 SGS

货号	产品规格	容量	备注
480121	330×220×H385	4L	需选配冰管
480122	330×220×H440	6L	需选配冰管
480123	330×220×H495	8L	需选配冰管
480124	380×270×H420	10L	需选配冰管
480125	380×270×H490	12L	需选配冰管
480126	380×270×H565	14L	需选配冰管



CE

### 和风不锈钢热饮桶套装 SGS

货号	产品规格	容量	备注
380141	330×220×H385	4L	220V/500W
380142	330×220×H440	6L	220V/500W
380143	330×220×H495	8L	220V/500W
380144	380×270×H420	10L	220V/500W
380145	380×270×H490	12L	220V/500W
380146	380×270×H565	14L	220V/500W



### 和风不锈钢冷饮桶套装 SGS

货号	产品规格	容量	备注
480141	330×220×H385	4L	需选配冰管
480142	330×220×H440	6L	需选配冰管
480143	330×220×H495	8L	需选配冰管
480144	380×270×H420	10L	需选配冰管
480145	380×270×H490	12L	需选配冰管
480146	380×270×H565	14L	需选配冰管



**三头柚木欧式食物分配器**

货号	产品规格	备注
121543	500×350×590	PC料+柚木底座



**三头柚木美式食物分配器**

货号	产品规格	备注
121544	500×350×660	PC料+柚木底座



**三头柚木日式食物分配器**

货号	产品规格	备注
121545	500×350×590	PC料+柚木底座



**三头柚木欧式果汁鼎**

货号	产品规格	备注
121546	500×350×650	PC料+柚木底座



**和风不锈钢饮料桶冰管**

货号	产品规格	备注
225931	Φ51×H200	适配和风4L饮料桶
225932	Φ51×H255	适配和风6L饮料桶
225933	Φ51×H310	适配和风8L饮料桶
225936	Φ63×H235	适配和风10L饮料桶
225937	Φ63×H305	适配和风12L饮料桶
225938	Φ63×H380	适配和风14L饮料桶



**清风不锈钢饮料桶冰管配管架**

货号	产品规格	备注
225941	Φ76×H245	适配清风10L饮料桶
225942	Φ76×H295	适配清风20L饮料桶



**清风不锈钢饮料桶网管**

货号	产品规格	备注
225946	Φ82×H245	适配清风10L饮料桶
225947	Φ82×H295	适配清风20L饮料桶



**不锈钢PC透明双头果汁鼎**

货号	产品规格	容量	型号
131021	358×257×737	5L×2	P12-5×2
131022	358×265×730	8L×2	P15-8×2



**木纹PC透明双头果汁鼎**

货号	产品规格	容量	型号
131023	358×257×737	5L×2	P12-5×2W
131024	358×265×730	8L×2	P15-8×2W



**不锈钢PC透明三头旋转式果汁鼎**

货号	产品规格	容量	型号
131026	340×392×745	5L×3	P12-5×3
131027	393×416×745	8L×3	P15-8×3



**木纹PC透明三头旋转式果汁鼎**

货号	产品规格	容量	型号
131028	340×392×745	5L×3	P12-5×3W
131029	393×416×745	8L×3	P15-8×3W



**不锈钢PC透明双头麦片机**

货号	产品规格	容量	型号
131031	390×250×857	5L×2	C12-5×2
131032	415×265×870	8L×2	C15-8×2



**木纹PC透明双头麦片机**

货号	产品规格	容量	型号
131033	390×250×857	5L×2	C12-5×2W
131034	415×265×870	8L×2	C15-8×2W



**不锈钢PC透明三头旋转式麦片机**

货号	产品规格	容量	型号
131036	335×418×877	5L×3	C12-5×3
131037	378×429×888	8L×3	C15-8×3



**木纹PC透明三头旋转式麦片机**

货号	产品规格	容量	型号
131038	335×418×877	5L×3	C12-5×3W
131039	378×429×888	8L×3	C15-8×3W



CE

C款不锈钢精钻电热暖汤煲

货号	产品规格	功率
121825	Φ320×H410	220V/600W



CE

C款不锈钢镀金精钻电热暖汤煲

货号	产品规格	功率
121826	Φ320×H410	220V/600W



CE

干加热全钢精钻欧式暖汤煲

货号	产品规格	功率	材质
119961	Φ240×H270	220V/500W	304桶
119962	Φ270×H320	220V/500W	304桶
119963	Φ350×H350	220V/500W	304桶



CE

干加热全钢精钻美式暖汤煲

货号	产品规格	功率	材质
120061	Φ240×H270	220V/500W	304桶
120062	Φ270×H320	220V/500W	304桶
120063	Φ350×H350	220V/500W	304桶



不锈钢PC透明单头果汁机

货号	产品规格	容量	型号
122371	350×230×850	5L	P12-5
122372	350×230×850	8L	P15-8
122373	350×230×850	12L	P18-12
122374	350×230×1250	10L	P12-10
122375	350×230×1250	16L	P15-16
122376	350×230×1250	24L	P18-24



不锈钢PC透明单头麦片机

货号	产品规格	容量	型号
122361	350×230×900	5L	C12-5
122362	350×230×900	8L	C15-8
122363	350×230×900	12L	C18-12
122364	350×230×1390	10L	C12-10
122365	350×230×1390	16L	C15-16
122366	350×230×1390	24L	C18-24



CE

干加热镀金精钻欧式暖汤煲

货号	产品规格	功率	材质
119966	Φ240×H270	220V/500W	304桶
119967	Φ270×H320	220V/500W	304桶
119968	Φ350×H350	220V/500W	304桶



CE

干加热镀金精钻美式暖汤煲

货号	产品规格	功率	材质
120066	Φ240×H270	220V/500W	304桶
120067	Φ270×H320	220V/500W	304桶
120068	Φ350×H350	220V/500W	304桶



E-80U系列阻尼铰链湿(干)两用高级电热布菲餐炉



- ①
- 电热布菲餐炉：配有700瓦电热板，可2档加热级别调节温度，能够在（60℃ - 85℃）范围内高效加热。
  - 恒温控制可实现快速、简单的温度调节。长时间保持食物处于完美的可食用温度。
  - 温馨提示：本产品为湿(干)两用设计，在使用时，根据食物的特点选择湿(干)模式。
- ②③④
- 炉盖开至90°位置，向上提可拆卸炉盖，方便清洗及储存





1/1方型钢盖电热餐炉

货号	产品规格	容量	型号
119751	576×467×222	13L	E-8011



1/1方型玻璃盖电热餐炉

货号	产品规格	容量	型号
119761	576×467×222	13L	E-8011UL



圆型钢盖电热餐炉

货号	产品规格	容量	型号
119754	442×538×222	8L	E-8060



圆型玻璃盖电热餐炉

货号	产品规格	容量	型号
119764	442×538×222	8L	E-8060UL



2/3方型钢盖电热餐炉

货号	产品规格	容量	型号
119752	400×467×222	8L	E-8032



2/3方型玻璃盖电热餐炉

货号	产品规格	容量	型号
119762	400×467×222	8L	E-8032UL



圆型钢盖电热餐炉

货号	产品规格	容量	型号
119755	372×465×222	6L	E-8040



圆型玻璃盖电热餐炉

货号	产品规格	容量	型号
119765	372×465×222	6L	E-8040UL



1/2方型钢盖电热餐炉

货号	产品规格	容量	型号
119753	312×467×218	6L	E-8021



1/2方型玻璃盖电热餐炉

货号	产品规格	容量	型号
119763	312×467×218	6L	E-8021UL



圆型钢盖电热汤炉

货号	产品规格	容量	型号
119756	372×465×315	11L	E-80-11



圆型玻璃盖电热汤炉

货号	产品规格	容量	型号
119766	372×465×315	11L	E-80-11UL

## 20U系列阻尼铰链高级餐炉



- 可用于电磁炉、电热板及酒精加热
- 可拆卸式水盆饰片
- 最新设计专利的可拆卸式阻尼铰链，水盆可配手挽
- 可拆卸炉盖方便清洗及储存
- 水盆材质：SS443(21CT)不锈钢材质
- SS443 (21CT) 的热传导率高
- 加热均匀 ● 高效储热
- 产品价格比普通复合底更加经济实惠，但拥有与304材质一样的耐腐蚀性
- 其导热率比SUS304高30%，沸水测试，导热比304快
- 沸水试验：

Temperature	Time	5mins	15mins	25mins	30mins
SS304 water pan		40°C	59°C	77°C	87°C
SS443 (21CT) water pan		41°C	60°C	80°C	90°C



1/1方形玻璃盖(电磁炉用)餐炉

货号	产品规格	容量	型号
119231	575×465×180	9L	2011UL
119591	575×370×147		8011UF



圆形玻璃盖(电磁炉用)餐炉

货号	产品规格	容量	型号
119234	440×530×170	6L	2060UL
119594	435×435×147		8060UF



2/3方形玻璃盖(电磁炉用)餐炉

货号	产品规格	容量	型号
119232	400×465×170	6L	2032UL
119592	400×370×147		8032UF



圆形玻璃盖(电磁炉用)餐炉

货号	产品规格	容量	型号
119235	370×455×160	4L	2040UL
119595	360×360×147		8040UF/80-11UF



1/2方形玻璃盖(电磁炉用)餐炉

货号	产品规格	容量	型号
119233	310×465×170	4L	2021UL
119593	310×370×147		8021UF



圆形玻璃盖(电磁炉用)汤炉

货号	产品规格	容量	型号
119236	440×455×260	11L	20-11UL
119595	360×360×147		8040UF/80-11UF



- 宇辉2020年最新系列自助餐炉**
- 可使用于电磁炉、电热板及酒精加热
  - 可拆卸式水盆饰片
  - 最新设计专利的可拆卸式液压铰链，水盆可配手柄，任君选择自由变换成大餐盆或餐炉，随时满足你各项要求



**80T系列水盆：SS304不锈钢材质，复合包底**

**80系列水盆：SS443 (21CT) 不锈钢材质**

- SS443 (21CT) 的热传导率高
- 加热均匀 ● 高效储热
- 产品价格比普通复合底更加经济实惠，但拥有与304材质一样的耐腐蚀性
- 沸水测试，导热比304更快

**沸水试验：**

Temperature	Time	5mins	15mins	25mins	30mins
SS304 water pan		40°C	59°C	77°C	87°C
SS443 (21CT) water pan		41°C	60°C	80°C	90°C



**1/1方型有耳餐炉水盆**

货号	产品规格	容量	型号
120401	650×360×115	9L	8011E
120901	650×360×115	9L	8011TE



**圆型有耳单底餐炉水盆**

货号	产品规格	容量	型号
120404	515×435×115	6L	8060E
120904	515×435×115	6L	8060TE



**2/3方型有耳餐炉水盆**

货号	产品规格	容量	型号
120402	475×365×115	6L	8032E
120902	475×365×115	6L	8032TE



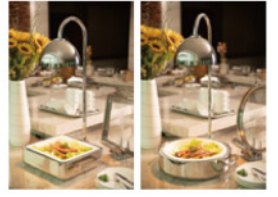
**圆型有耳单底餐炉水盆**

货号	产品规格	容量	型号
120405	440×365×115	4L	8040E
120905	440×365×115	4L	8040TE



**1/2方型有耳餐炉水盆**

货号	产品规格	容量	型号
120403	385×365×115	4L	8021E
120903	385×365×115	4L	8021TE



**2/3方形玻璃盖(电磁炉用)餐炉**

货号	产品规格	容量	型号
120212	465×400×160	6L	8032L
120252	465×400×160	6L	8032TL
120282	420×390×205		8032F



**2/3方形钢盖(电磁炉用)餐炉**

货号	产品规格	容量	型号
120202	465×400×160	6L	8032
120242	465×400×160	6L	8032T
120282	420×390×205		8032F

**2/3方形有耳玻璃盖(电磁炉用)餐炉**

货号	产品规格	容量	型号
120232	465×400×160	6L	8032EL
120272	465×400×160	6L	8032TEL
120282	420×390×205		8032F



**2/3方形有耳钢盖(电磁炉用)餐炉**

货号	产品规格	容量	型号
120222	465×400×160	6L	8032E
120262	465×400×160	6L	8032TE
120282	420×390×205		8032F

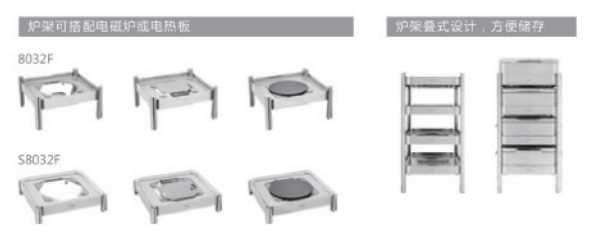
**2/3方形玻璃盖(电磁炉用)餐炉**

货号	产品规格	容量	型号
120212	465×400×160	6L	8032L
120252	465×400×160	6L	8032TL
120292	400×370×95		S8032F



**2/3方形钢盖(电磁炉用)餐炉**

货号	产品规格	容量	型号
120202	465×400×160	6L	8032
120242	465×400×160	6L	8032T
120292	400×370×95		S8032F



### 1/2方形玻璃盖(电磁炉用)餐炉

货号	产品规格	容量	型号
120213	465×310×160	4L	8021L
120253	465×310×160	4L	8021TL
120283	390×330×205		8021F



### 1/2方形有耳玻璃盖(电磁炉用)餐炉

货号	产品规格	容量	型号
120233	465×310×160	4L	8021EL
120273	465×310×160	4L	8021TEL
120283	390×330×205		8021F



### 1/2方形钢盖(电磁炉用)餐炉

货号	产品规格	容量	型号
120203	465×310×160	4L	8021
120243	465×310×160	4L	8021T
120283	390×330×205		8021F

### 1/2方形有耳钢盖(电磁炉用)餐炉

货号	产品规格	容量	型号
120223	465×310×160	4L	8021E
120263	465×310×160	4L	8021TE
120283	390×330×205		8021F

### 1/2方形钢盖(电磁炉用)餐炉

货号	产品规格	容量	型号
120203	465×310×160	4L	8021
120243	465×310×160	4L	8021T
120293	370×310×95		S8021F

### 1/2方形玻璃盖(电磁炉用)餐炉

货号	产品规格	容量	型号
120213	465×310×160	4L	8021L
120253	465×310×160	4L	8021TL
120293	370×310×95		S8021F

8021L

8021EL

8021

8021E

8021TL

8021TEL

8021T

8021TE



可使用：陶瓷食物盆



炉架可搭配电磁炉或电热板



炉架叠式设计，方便储存



### 圆形玻璃盖(电磁炉用)餐炉

货号	产品规格	容量	型号
120215	460×370×165	4L	8040L
120255	460×370×165	4L	8040TL
120285	420×420×205		8040F/80-11F



### 圆形钢盖(电磁炉用)餐炉

货号	产品规格	容量	型号
120205	460×370×165	4L	8040
120245	460×370×165	4L	8040T
120285	420×420×205		8040F/80-11F

### 圆形有耳钢盖(电磁炉用)餐炉

货号	产品规格	容量	型号
120225	460×370×165	4L	8040E
120265	460×370×165	4L	8040TE
120285	420×420×205		8040F/80-11F

### 圆形玻璃盖(电磁炉用)餐炉

货号	产品规格	容量	型号
120215	460×370×165	4L	8040L
120255	460×370×165	4L	8040TL
120295	390×390×95		S8040F/S80-11F

8040L

8040EL

8040

8040E

8040TL

8040TEL

8040T

8040TE



可使用：陶瓷食物盆



炉架可搭配电磁炉或电热板



炉架叠式设计，方便储存





### 圆形玻璃盖(电磁炉用)汤炉

货号	产品规格	容量	型号
120216	460×450×265	11L	80-11L
120256	460×450×265	11L	80-11TL
120285	420×420×205		8040F/80-11F



### 圆形钢盖(电磁炉用)汤炉

货号	产品规格	容量	型号
120206	460×450×265	11L	80-11
120246	460×450×265	11L	80-11T
120285	420×420×205		8040F/80-11F



### 圆形玻璃盖(电磁炉用)汤炉

货号	产品规格	容量	型号
120216	460×450×265	11L	80-11L
120256	460×450×265	11L	80-11TL
120295	390×390×95		S8040F/S80-11F

80-11L  
80-11TL



80-11  
80-11T



可使用：陶密食物盆



炉架叠式设计，方便储存



炉架可搭配电磁炉或电热板

8040F/80-11F



S8040F/S80-11F



### 方型迷你自助餐煲架

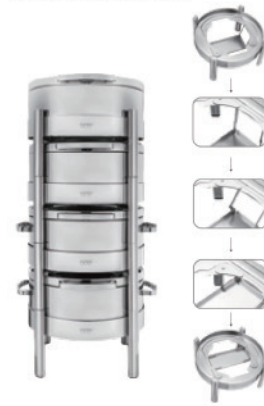
货号	产品规格	型号
120110	300×245×145	R-295F



### 圆型自助餐煲架

货号	产品规格	型号
120479	312×312×145	M-280F
120480	335×335×145	M-300F

### 炉架叠式储存详解图



### 方形黑色和风自助餐煲架

货号	产品规格	备注
120489	365×365×115	适配9.280mm煲架
120490	395×395×115	适配9.300mm煲架



### 不锈钢PC透明冷/热果汁鼎

货号	产品规格	容量	型号
120286	300×285×670	12L	80-12P



### 不锈钢咖啡鼎

货号	产品规格	容量	型号
120287	300×285×550	8L	80-08



### 不锈钢PC透明冷/热果汁鼎

货号	产品规格	容量	型号
120296	300×285×670	12L	80-12PT



### 不锈钢咖啡鼎

货号	产品规格	容量	型号
120297	300×285×550	8L	80-08T



### 不锈钢咖啡鼎

货号	产品规格	容量	型号
120288	300×285×670	12L	80-12



### 不锈钢咖啡鼎

货号	产品规格	容量	型号
120289	300×285×760	16L	80-16



### 不锈钢咖啡鼎

货号	产品规格	容量	型号
120298	300×285×670	12L	80-12T



### 不锈钢咖啡鼎

货号	产品规格	容量	型号
120299	300×285×760	16L	80-16T



胶柄单头波浪轮刀

货号	产品规格	备注
184791	Φ60mm	单头



胶柄双头波浪轮刀

货号	产品规格	备注
184792	Φ40mm	双头



胶柄不锈钢馅饼刀

货号	产品规格	备注
151111	刃长135mm	不锈钢



胶柄不锈钢蛋糕铲

货号	产品规格	备注
151121	55×140mm	不锈钢



胶柄不锈钢阔身蛋糕铲

货号	产品规格	备注
151122	76×160mm	不锈钢



胶柄不锈钢方形小煎铲

货号	产品规格	备注
151123	63×145mm	大号



胶柄不锈钢铲刀

货号	产品规格	备注
151112	刃长105mm	不锈钢



胶柄不锈钢蛋糕铲刀

货号	产品规格	备注
151113	刃长145mm	不锈钢



胶柄不锈钢批萨轮刀

货号	产品规格	备注
151114	Φ96×232mm	不锈钢



胶柄不锈钢方形小煎铲

货号	产品规格	备注
151124	58×86mm	小号



胶柄不锈钢加厚扒铲

货号	产品规格	备注
151125	75×145mm	小号



胶柄不锈钢加厚扒铲

货号	产品规格	备注
151126	107×178mm	中号



胶柄不锈钢有孔西铲

货号	产品规格	备注
151135	50×123mm	不锈钢



胶柄不锈钢无孔西铲

货号	产品规格	备注
151136	50×123mm	不锈钢



胶柄不锈钢圆头西铲

货号	产品规格	备注
151139	163×200mm	木柄



胶柄不锈钢加厚扒铲

货号	产品规格	备注
151127	130×205mm	大号



胶柄不锈钢三边利口铲

货号	产品规格	备注
151130	74×200mm	不锈钢



胶柄不锈钢无孔煎铲

货号	产品规格	备注
151129	75×240mm	不锈钢



胶柄不锈钢有孔西铲

货号	产品规格	备注
151137	89×120mm	不锈钢



胶柄不锈钢无孔西铲

货号	产品规格	备注
151138	89×120mm	不锈钢



胶柄不锈钢蛋糕西铲

货号	产品规格	备注
151118	Φ250mm	不锈钢
151119	Φ300mm	不锈钢



胶柄不锈钢有孔煎铲

货号	产品规格	备注
151128	75×240mm	不锈钢



胶柄不锈钢三角铲

货号	产品规格	备注
151131	100×130mm	不锈钢



胶柄不锈钢鱼铲

货号	产品规格	备注
151132	78×160mm	不锈钢



全钢柄砂胶油扫

货号	产品规格	材质
184192	40×265mm	304



塑钢柄砂胶油扫

货号	产品规格	材质
184232	40×265mm	304



圆柄钢果挖

货号	产品规格	备注
184153	Φ26×175mm	单头



胶柄蛋形双头果挖

货号	产品规格	备注
184741	Φ26mm/Φ30mm	



胶柄心形单头果挖

货号	产品规格	备注
184751	Φ30mm	



不锈钢塑柄双头果挖

货号	产品规格	备注
184861		蛋形/心形



不锈钢(单头)果挖

货号	产品规格	备注
184901	Φ10mm	单头



不锈钢(双头)果挖

货号	产品规格	备注
184701		双头



不锈钢(双头)果挖

货号	产品规格	备注
184801		双头



胶柄坑刮

货号	产品规格	备注
184762	20mm	



胶柄柠檬刮

货号	产品规格	备注
184763	25mm	



胶柄双用柠檬刮

货号	产品规格	备注
184764	25mm	



胶柄圆形单头果挖

货号	产品规格	备注
184711	Φ10mm	圆形
184712	Φ15mm	圆形
184713	Φ22mm	圆形
184714	Φ25mm	圆形
184715	Φ30mm	圆形



胶柄圆形双头果挖

货号	产品规格	备注
184721	Φ22mm/Φ25mm	圆形
184722	Φ22mm/Φ30mm	圆形



不锈钢塑柄单头果挖

货号	产品规格	备注
184831	Φ28mm	圆形



胶柄双头柠檬坑刮

货号	产品规格	备注
184765	27mm/28mm	



胶柄芝士刮

货号	产品规格	备注
184761	80mm	



胶柄牛油刮刮刀

货号	产品规格	备注
184769	85mm	



不锈钢塑柄单头果挖

货号	产品规格	备注
184832	Φ28mm	圆形/蛋形



胶柄蛋形单头果挖

货号	产品规格	备注
184731	Φ26mm	



胶柄波浪蛋形单头果挖

货号	产品规格	备注
184732	Φ30mm	



胶柄去心刀

货号	产品规格	备注
184768	95mm	



黑胶柄巧克力刮花刀

货号	产品规格	备注
1076		TTM



黑胶柄蛋糕铲刀

货号	产品规格	备注
1038		TTM

**不锈钢加粗线打蛋器**

货号	产品规格	备注
703421	10寸 250mm	1' 8色
703422	12寸 300mm	1' 8色

**不锈钢粗线打蛋器**

货号	产品规格	备注
703501	10寸 250mm	3/4" 8色
703502	12寸 300mm	3/4" 8色
703503	14寸 350mm	1" 8色
703504	16寸 400mm	1" 8色
703505	18寸 450mm	1" 8色
703506	20寸 500mm	1" 8色
703507	22寸 550mm	1" 8色
703508	24寸 600mm	1" 8色

**不锈钢加密线打蛋器**

货号	产品规格	备注
703411	10寸 250mm	1" 12色
703412	12寸 300mm	1" 12色
703413	14寸 350mm	1" 12色
703414	16寸 400mm	1" 12色
703415	18寸 450mm	1" 12色
703416	20寸 500mm	1" 12色
703417	22寸 550mm	1" 12色
703418	24寸 600mm	1" 12色

**不锈钢搅拌棒**

货号	产品规格	备注
185701	115×L400mm	24寸
185702	115×L700mm	30寸
185703	115×L910mm	36寸
185704	115×L1000mm	42寸
185705	115×L1200mm	48寸
185706	115×L1300mm	54寸
185707	115×L1500mm	60寸

**不锈钢线制搅拌棒**

货号	产品规格	备注
185801	170×110×L1170mm	小号
185802	250×130×L1250mm	中号
185803	250×150×L1250mm	大号

**不锈钢板式压薯器**

货号	产品规格	备注
195031	Φ120×L600mm	小号
195032	Φ150×L800mm	中号
195033	Φ180×L1000mm	大号

**不锈钢加长柄打蛋器**

货号	产品规格	备注
703601	850mm	1' 8色
703602	1000mm	1' 8色
703603	1200mm	1' 8色

**不锈钢扁柄打蛋器**

货号	产品规格	备注
703611	10寸 250mm	48色
703612	12寸 300mm	48色

**不锈钢硅胶打蛋器**

货号	产品规格	备注
703431	10寸 250mm	红色硅胶
703432	12寸 300mm	红色硅胶

**木柄钢压薯器**

货号	产品规格	备注
195021	L1000mm	木柄

**全钢钢压薯器**

货号	产品规格	备注
195011	L500mm	30钢
195012	L800mm	30钢

**不锈钢薯条过滤器**

货号	产品规格	备注
627801	Φ410×Φ180×210mm	不锈钢

**不锈钢硅胶打蛋器**

货号	产品规格	备注
703433	10寸 250mm	蓝色硅胶
703434	12寸 300mm	蓝色硅胶

**不锈钢搅蛋器**

货号	产品规格	备注
703691	L320mm	36001A

**塑胶搅蛋器**

货号	产品规格	备注
703692	L320mm	36001B

**不锈钢线柄压薯器**

货号	产品规格	备注
195000	Φ90×300mm	手压式

**(手压式)不锈钢薯蓉压**

货号	产品规格	备注
195001	Φ80×230mm	手压式

**不锈钢V形薯蓉压**

货号	产品规格	备注
195002	300×110×100mm	手压式

**不锈钢蛋壳刮破器**

货号	产品规格	备注
198921	Φ33×H110mm	开盖器

**不锈钢蛋清分离器**

货号	产品规格	备注
627201	D-109	不锈钢

**不锈钢平口清洁铲**

货号	产品规格	备注
185601	90×705mm	不锈钢

**不锈钢活动底座薯器**

货号	产品规格	备注
195003	Φ80×320mm	配三块底座

**塑料薯仔压**

货号	产品规格	备注
627701	850	塑料

**不锈钢平口薯条铲**

货号	产品规格	备注
181411	210×175×330mm	304钢

**不锈钢单柄薯条铲**

货号	产品规格	备注
181401	190×230mm	单柄

**不锈钢双柄薯条铲**

货号	产品规格	备注
181402	190×230mm	双柄

**胶柄不锈钢薯条铲**

货号	产品规格	备注
627811	210×230mm	单柄

**铸铝切片机(10"×19"×30")**

货号	产品规格	备注
198973	刀片尺寸: 3/8"×25"	MX-105 (可组合使用)

**铸铝切块机(8"×8"×18")**

货号	产品规格	备注
198981	68	MX-106
198982	82	MX-106

**不锈钢刨菜器**

货号	产品规格	备注
195110	510×125×200	配刀片

**胶柄不锈钢薯条铲**

货号	产品规格	备注
627812	210×230mm	双柄

**不锈钢磨菜器**

货号	产品规格	备注
195115	Φ200mm	配五个网
195112	Φ230mm	配五个网

**不锈钢大号磨菜器**

货号	产品规格	备注
195113	Φ300mm	配五个网

**不锈钢薯网**

货号	产品规格	备注
151301	180×120mm	胶柄

**不锈钢加厚四方刨**

货号	产品规格	备注
625201	110×110×220mm	方形

**不锈钢加厚四方刨**

货号	产品规格	备注
625202	110×80×230mm	梯形

**不锈钢薯条机(配三块刀片)**

货号	产品规格	备注
198961	刀片尺寸: 1/2" 1/8" 切块	MX-003-1

**铸铝薯条机(配三块刀片)**

货号	产品规格	备注
198962	刀片尺寸: 1/2" 1/8" 切块	MX-003-3

**铸铝薯条机(配三块刀片)**

货号	产品规格	备注
198963	刀片尺寸: 1/2" 1/8" 1/4"	

**不锈钢六面刨**

货号	产品规格	备注
195251	145×112×H220mm	配底座

**不锈钢梯形刨**

货号	产品规格	备注
195252	115×85×H245mm	配底座

**不锈钢长形平刨**

货号	产品规格	备注
195271	L400mm	通用刨架, 蒜, 朱古力

**铸铝番茄切片机**

货号	产品规格	备注
198951	切片厚度: 1/8"	MX-042
198952	切片厚度: 3/16"	MX-042

**铸铝切菜机(18"×13"×20")**

货号	产品规格	备注
198971	23英寸刀架: 1"×1"	MX-002

**铸铝切片机(配两块刀片)**

货号	产品规格	备注
198972	刀片尺寸: 1/2" 3/8"	MX-104

**不锈钢长形平刨**

货号	产品规格	备注
195272	L400mm	通用刨架, 蒜, 洋葱

**不锈钢长形平刨**

货号	产品规格	备注
195273	L400mm	通用刨架, 蒜, 洋葱

**不锈钢长形平刨**

货号	产品规格	备注
195274	L400mm	通用刨架, 蒜, 洋葱



铝切蛋器

货号	产品规格	备注
711901	130×80mm	铝制



不锈钢圆形切蛋器

货号	产品规格	备注
198901	Φ100×H30mm	304#



不锈钢方形切蛋器

货号	产品规格	备注
198902	100×85×H30mm	304#



不锈钢1.5L粉筒

货号	产品规格	备注
604102	小粉筒	304#
604112	中粉筒	304#
604122	长粉筒	304#
604132	9cm粉筒	304#



不锈钢2.5L粉筒

货号	产品规格	备注
604103	小粉筒	304#
604113	中粉筒	304#
604123	长粉筒	304#
604133	9cm粉筒	304#



不锈钢网纱粉筒

货号	产品规格	备注
604101	小粉筒	304#
604111	中粉筒	304#
604121	长粉筒	304#
604131	9cm粉筒	304#



不锈钢多用粉筒

货号	产品规格	备注
604114	中粉筒	304#
604124	长粉筒	304#



不锈钢小安称

货号	产品规格	备注
631101	2kg	
631102	4kg	
631103	5kg	



不锈钢台称

货号	产品规格	备注
631201	5kg	
631202	8kg	
631203	10kg	
631204	20kg	



不锈钢石田磅

货号	产品规格	备注
631501	20斤/2磅	



喷塑石田磅

货号	产品规格	备注
631401	15斤/2磅	
631402	20斤/2磅	
631403	30斤/4磅	



时尚厨房秤

货号	产品规格	备注
YHC1407	5kg/1g	



时尚厨房秤

货号	产品规格	备注
YHC1618	3kg/1g	



不锈钢量匙

货号	产品规格	备注
603002	四件装	不锈钢



不锈钢方柄量匙

货号	产品规格	备注
603008	四件装	不锈钢



不锈钢锥形量匙

货号	产品规格	备注
603009	四件装	不锈钢



不锈钢线柄量匙

货号	产品规格	备注
603001	四件装	不锈钢



不锈钢圆形量匙

货号	产品规格	备注
603007	五件装	不锈钢



不锈钢八个装量匙

货号	产品规格	备注
603004	MP-800	不锈钢



不锈钢圆形味匙

货号	产品规格	备注
603031	五件装	不锈钢



不锈钢方形味匙

货号	产品规格	备注
603032	四件装	不锈钢



食物电子温度计

货号	产品规格	备注
152505	-45℃~+200℃	



食物电子快速温度计

货号	产品规格	备注
152506	-40℃~+200℃	



不锈钢温度计

货号	产品规格	备注
152501	60℃	液体温度计
152502	200℃	液体温度计



不锈钢牛扒温度计

货号	产品规格	备注
152503	200℃	牛扒温度计



棉布奶茶袋连架(过食检)

货号	产品规格	备注
640301	小号 130mm	奶茶袋
640302	小号 130mm	奶茶袋



棉布奶茶袋连活动架(过食检)

货号	产品规格	备注
640301	小号 130mm	奶茶袋
640303	小号 130mm	奶茶袋
640304	中号 200mm	奶茶袋
640305	中号 200mm	奶茶袋
640306	大号 240mm	奶茶袋
640307	大号 240mm	奶茶袋



TC棉布奶茶袋连钢架(过食检)

货号	产品规格	备注
640311	200×230mm	奶茶袋
640312	小号	奶茶袋
640313	300×300mm	奶茶袋
640314	中号	奶茶袋
640315	350×300mm	奶茶袋
640316	大号	奶茶袋



(带刻度)不锈钢量杯

货号	产品规格	备注
124401	500ml	0.8mm
124402	1000ml	0.8mm
124403	2000ml	0.8mm
124404	3000ml	0.8mm



砂光不锈钢量杯

货号	产品规格	备注
124411	500ml	砂光
124412	700ml	砂光
124413	1800ml	砂光
124414	1500ml	砂光
124415	2000ml	砂光



铝制带刻度量杯

货号	产品规格	备注
712311	6.5qt	铝制
712312	1.0qt	铝制
712313	2.0qt	铝制
712314	4.0qt	铝制



不锈钢(带刻度)量壳

货号	产品规格	备注
194631	φ80×H53×1.0mm	250ml
194632	φ90×H59×1.0mm	350ml
194633	φ100×H65×1.0mm	500ml
194634	φ120×H70×1.0mm	750ml
194635	φ140×H75×1.0mm	1000ml



不锈钢心形量杯

货号	产品规格	备注
194615	四件装	304#



不锈钢七个装量杯

货号	产品规格	备注
603103	MP-700	不锈钢



不锈钢片柄量杯

货号	产品规格	备注
194611	四件装	304#



不锈钢线柄量杯

货号	产品规格	备注
603101	四件装	不锈钢



不锈钢蛋形量杯

货号	产品规格	备注
603105	四件装	不锈钢



不锈钢片柄量匙

货号	产品规格	备注
194651	六件装	304#



不锈钢线柄量匙

货号	产品规格	备注
194652	六件装	304#



不锈钢心形量匙

货号	产品规格	备注
194655	四件装	304#



不锈钢蛋形计时器

货号	产品规格	备注
198005	60分钟	不锈钢



不锈钢有座蛋形计时器

货号	产品规格	备注
198004	60分钟	不锈钢



不锈钢苹果形计时器

货号	产品规格	备注
198006	60分钟	不锈钢



不锈钢飞碟形计时器

货号	产品规格	备注
198007	60分钟	不锈钢



不锈钢地螺形计时器

货号	产品规格	备注
198008	60分钟	不锈钢



不锈钢斜面计时器

货号	产品规格	备注
198021	60分钟	砂光



不锈钢半圆形计时器

货号	产品规格	备注
198022	60分钟	小号



不锈钢半圆形计时器

货号	产品规格	备注
198023	60分钟	大号



不锈钢方形计时器

货号	产品规格	备注
198009	60分钟	砂光



不锈钢煲形计时器

货号	产品规格	备注
198024	60分钟	抛光
198025	60分钟	砂光



不锈钢锥形油斗

货号	产品规格	备注
181901	Φ130×H200mm	不锈钢



不锈钢锥形油斗架

货号	产品规格	备注
181902	Φ115×Φ130×H165mm	不锈钢



不锈钢斜口食物碗

货号	产品规格	备注
123181	Φ190×H200mm	不锈钢
123182	Φ250×H245mm	不锈钢



镀金斜口不锈钢碗

货号	产品规格	备注
123186	Φ190×H200mm	镀金
123187	Φ250×H245mm	镀金



不锈钢斜身无把薯条桶

货号	产品规格	备注
123356	Φ106×H91mm	小号
123357	Φ133×H114mm	中号
123358	Φ164×H136mm	大号



不锈钢直身方形小炸篮

货号	产品规格	备注
193031	100×80×H75mm	TY1087



不锈钢斜身方形小炸篮

货号	产品规格	备注
193032	128×128×H75mm	TY1212
193033	102×102×H75mm	TY1010



不锈钢斜身长方形小炸篮

货号	产品规格	备注
193034	128×102×H75mm	TY1210
193035	102×85×H75mm	TY1008



(镀金)不锈钢斜身无把薯条桶

货号	产品规格	备注
123316	Φ106×H91mm	小号
123317	Φ133×H114mm	中号
123318	Φ164×H136mm	大号



不锈钢斜身提把薯条桶

货号	产品规格	备注
123351	Φ106×H91mm	小号
123352	Φ133×H114mm	中号
123353	Φ164×H136mm	大号



(镀金)不锈钢斜身提把薯条桶

货号	产品规格	备注
123311	Φ106×H91mm	小号
123312	Φ133×H114mm	中号
123313	Φ164×H136mm	大号



(玫瑰金)不锈钢直身方形小炸篮

货号	产品规格	备注
193037	100×80×H75mm	TY1087G



(玫瑰金)不锈钢斜身方形小炸篮

货号	产品规格	备注
193045	128×128×H75mm	TY1212G
193046	102×102×H75mm	TY1010G



(玫瑰金)不锈钢斜身长方形小炸篮

货号	产品规格	备注
193047	128×102×H75mm	TY1210G
193048	102×85×H75mm	TY1008G



V形不锈钢薯条筒

货号	产品规格	备注
123321	Φ108×H105mm	小号
123322	Φ125×H125mm	中号
123323	Φ146×H145mm	大号



V形(镀金)不锈钢薯条筒

货号	产品规格	备注
123326	Φ108×H105mm	小号
123327	Φ125×H125mm	中号
123328	Φ146×H145mm	大号



V形不锈钢薯条筒底座

货号	产品规格	备注
123331	Φ71×H65mm	小号
123332	Φ77×H73mm	中号
123333	Φ85×H83mm	大号



V形(镀金)不锈钢薯条筒底座

货号	产品规格	备注
123336	Φ71×H65mm	小号



V形不锈钢带脚薯条筒

货号	产品规格	备注
123341	Φ108×H120mm	小号



V形(镀金)不锈钢带脚薯条筒

货号	产品规格	备注
123346	Φ108×H120mm	小号



不锈钢直身长方形小炸篮

货号	产品规格	备注
193036	200×120×H80mm	TY2012



不锈钢单柄圆形小炸篮

货号	产品规格	备注
193021	Φ80×H80mm	TY1148
193022	Φ90×H80mm	TY1874



不锈钢双耳圆形小炸篮

货号	产品规格	备注
193023	Φ80×H80mm	TY1148
193024	Φ90×H80mm	TY1875



(玫瑰金)不锈钢直身长方形小炸篮

货号	产品规格	备注
193038	200×120×H80mm	TY2012G



(玫瑰金)不锈钢单柄圆形小炸篮

货号	产品规格	备注
193026	Φ80×H80mm	TY1148G



(玫瑰金)不锈钢双耳圆形小炸篮

货号	产品规格	备注
193028	Φ80×H80mm	TY1148G



不锈钢板形餐牌架

货号	产品规格	备注
197022	L60×H40mm	不锈钢
197023	L90×H40mm	不锈钢



不锈钢T形餐牌座

货号	产品规格	备注
197008	Φ60×H85mm	不锈钢



不锈钢高杆餐牌座

货号	产品规格	备注
197108	120×120×H1500mm	不锈钢



不锈钢直式吊牌

货号	产品规格	备注
197305	110×100×H280mm	不锈钢



不锈钢V形餐牌座

货号	产品规格	备注
197202	110×110×H395mm	不锈钢



镀金方脚V形餐牌座

货号	产品规格	备注
197201	110×110×H395mm	镀金



不锈钢心形餐牌座

货号	产品规格	备注
196800	Φ80×H100mm	4寸
196801	Φ80×H150mm	6寸
196802	Φ80×H200mm	8寸
196803	Φ80×H250mm	10寸
196804	Φ80×H300mm	12寸



不锈钢扇形餐牌座

货号	产品规格	备注
196901	Φ80×H150mm	6寸
196902	Φ80×H200mm	8寸
196903	Φ80×H250mm	10寸
196904	Φ80×H300mm	12寸



不锈钢叶形餐牌座

货号	产品规格	备注
197001	Φ80×H150mm	6寸
197002	Φ80×H200mm	8寸
197003	Φ80×H250mm	10寸
197004	Φ80×H300mm	12寸



不锈钢V形餐牌座

货号	产品规格	备注
197101	Φ80×H150mm	6寸
197102	Φ80×H200mm	8寸
197103	Φ80×H250mm	10寸
197104	Φ80×H300mm	12寸



(挂墙式)不锈钢纸插

货号	产品规格	备注
197301	300×80×20mm	
197302	400×80×20mm	
197303	500×80×20mm	
197304	600×80×20mm	
197305	800×80×20mm	
197306	1200×80×20mm	



(挂墙式)铝合金纸插

货号	产品规格	备注
197711	L300mm	12寸
197712	L400mm	16寸
197713	L450mm	18寸
197714	L600mm	24寸
197715	L900mm	36寸
197716	L1200mm	48寸



不锈钢蛋糕夹

货号	产品规格	备注
611601	8寸 200mm	T6019A



不锈钢蛋糕夹

货号	产品规格	备注
611602	9.5寸 240mm	T6020



不锈钢蛋糕夹

货号	产品规格	备注
611603	11.5寸 304mm	



不锈钢平口夹

货号	产品规格	备注
611701	9.5寸 240mm	T6073



不锈钢蛋糕夹

货号	产品规格	备注
611501	7寸	不锈钢



不锈钢蛋糕夹

货号	产品规格	备注
611502	8寸	不锈钢



不锈钢蛋糕夹

货号	产品规格	备注
611503	10寸	不锈钢



加厚不锈钢蛋糕夹

货号	产品规格	备注
611511	10寸	不锈钢



不锈钢意粉夹

货号	产品规格	备注
611101	单齿	不锈钢



不锈钢意粉夹

货号	产品规格	备注
611102	双齿	不锈钢



不锈钢意粉夹

货号	产品规格	备注
611103	无齿	不锈钢



不锈钢意粉夹

货号	产品规格	备注
611111	12寸	加长柄

# Contact Information :

Sean Liang

Brand Project Manager

M: +86 189 2877 3217

Sales3@linenpro.net